



BOTSWANA  
EXAMINATIONS  
COUNCIL

## **2009 JUNIOR CERTIFICATE EXAMINATION RESULTS SUMMARY**



## INTRODUCTION

The Junior Certificate Examination (JCE) assesses the achievement of learners who have completed the last three years of the 10-year Basic Education Programme. The 10-year basic education curriculum blueprint outlines subject specific learning outcomes and skill areas that cut across all subject areas. The curriculum and examinations at the junior secondary level, put emphasis on understanding and application of concepts; development of inquiry, decision making, reasoning, creative, analytical, problem solving and process skills and the acquisition of hands on experience that should increase the participation and performance of all groups e.g. groups of different abilities, learners with special needs, girls and boys. All these skills entail more practical and challenging content that require higher levels of engagement of a learner's cognitive ability that are commonly referred to as High Order Thinking skills (HOTS).

A total of 206 school centres and 45 private centres registered candidates for the 2009 JCE. The 2009 JCE assessed, for the second time, candidates in the 4 junior secondary schools that introduced 'double shift' in 2006. The JCE examination papers were administered from 26 October to 6 November, 2009. Marking of examination scripts started on the 1<sup>st</sup> of December and was completed on the 17<sup>th</sup> December 2009.

The 2009 JCE Summary Results Report is structured as follows:

- ◆ Candidature
- ◆ Overall Performance
- ◆ Performance by Subject
- ◆ Performance by Centre
- ◆ Performance by Gender
- ◆ Performance by Education Region

**2009 JCE RESULTS SUMMARY**

**1.0 CANDIDATURE**

<b>Table 1.1</b>									
<b>JCE CANDIDATURE IN 2007, 2008 AND 2009 BY SUBJECT AND GENDER</b>									
<b>SUBJECTS</b>	<b>2007</b>			<b>2008</b>			<b>2009</b>		
	<b>All</b>	<b>Male</b>	<b>Female</b>	<b>All</b>	<b>Male</b>	<b>Female</b>	<b>All</b>	<b>Male</b>	<b>Female</b>
<b>Setswana</b>	37555	18427	19128	38284	18482	19802	40037	19457	20580
<b>English</b>	37775	18515	19260	38483	18582	19901	40360	19613	20747
<b>Mathematics</b>	37739	18497	19242	38466	18567	19899	40359	19611	20748
<b>Integrated Science (Incl. Gen Sci.)</b>	37701	18413	19288	38463	18568	19895	40318	19589	20729
<b>Social Studies</b>	37672	18467	19205	38462	18576	19886	40311	19576	20735
<b>Design &amp; Technology</b>	9624	7096	2528	9531	7059	2472	9487	7083	2404
<b>Agriculture (Incl. Pvt. Agric.)</b>	37684	17645	20039	38452	18564	19888	40301	19583	20718
<b>Home Economics</b>	9760	1420	8340	9704	1424	8280	9793	1423	8370
<b>Business Subjects</b>	9332	3555	5777	9919	3604	6315	11846	3371	7475
<b>Religious Education</b>	22415	9306	13109	22419	9052	13367	22493	8917	13576
<b>Art</b>	9459	6623	2836	9510	6591	2919	9533	6880	2653
<b>Moral Education</b>	37597	18431	19166	38454	18564	19890	40275	19571	20704
<b>French</b>	770	379	391	805	383	422	1659	734	925
<b>Music</b>	532	283	249	579	280	299	1267	679	588
<b>Physical Education</b>	13971	8497	5474	14671	8845	5826	14936	9281	5655
<b>Total Candidature</b>	<b>37557</b>	<b>18410</b>	<b>19147</b>	<b>38293</b>	<b>18499</b>	<b>19794</b>	<b>40180</b>	<b>19518</b>	<b>20624</b>

## 2009 JCE RESULTS SUMMARY

- The total number of candidates who satisfied the requirements of the 2009 Junior Certificate Examination (JCE) is **40180**
- Out of the **40180** candidates, **38114** were school candidates, while **2066** were from private centres.
- The number of school candidates meeting the requirements of 2009 JCE increased by **1421** from last year's figure of **36693**; while the number of private candidates increased by **630** from last year's figure of **1436**.
- These figures show a higher proportionate increase in the number of private candidates compared to school candidates.
- There were **19534** male candidates and **20646** female candidates.
- All the subjects showed an increase in candidature except Design and Technology.

**2009 JCE RESULTS SUMMARY**

**Table 1.2  
JCE CANDIDATURE IN 2007, 2008 AND 2009 BY SUBJECT AND TYPE OF CENTRE**

SUBJECTS	2009		2008		2007	
	School Centre	Private Centre	School Centre	Private Centre	School Centre*	Private Centre**
<b>Setswana</b>	37883	2154	36559	1660	36200	1355
<b>English</b>	38121	2235	36694	1714	36358	1417
<b>Mathematics</b>	38121	2238	36694	1697	36357	1382
<b>Integrated Science</b>	38121	-	36694	-	36358	-
<b>General Science</b>	-	2197	-	1694	-	1343
<b>Social Studies</b>	38121	2190	36694	1693	36358	1314
<b>Design &amp; Technology</b>	9487	-	9531	-	9624	-
<b>Agriculture</b>	38101	-	36882		36355	-
<b>Private Agriculture</b>	20	2180	12	1683	3	1326
<b>Home Economics</b>	9793	-	9704	-	9760	-
<b>Business Subjects</b>	9635	2211	8171	1673	8000	1150
<b>Religious Education</b>	20348	2180	20715	1630	21108	1307
<b>Art</b>	9533	-	9510	-	9459	-
<b>Moral Education</b>	38108	2167	36688	1691	36345	1252
<b>French</b>	1640	19	786	19	751	19
<b>Music</b>	1267	-	579	-	532	-
<b>Physical Education</b>	14936	-	14671	-	13971	-

**\*School centres** include all government schools and those non-government schools that follow the national junior secondary curriculum.

**\*\*Private centres** are for candidates who have been studying privately, those who study with Botswana College of Distance and Open Learning (BOCODOL).

2.0: OVERALL PERFORMANCE

2009 JUNIOR SECONDARY EXAMINATION RESULTS		
<b>Candidature:</b>	<b>40180</b>	
Merit	44	0.1%
A	618	1.5%
B	8950	22.3%
C	20494	51.0%
D	10074	25.1%

Table 2.1: Comparison of 2009 results with 2008 and 2007 for all grades by number and cumulative percentage

YEAR	Merit		Grade A		Grade B		Grade C		Grade D	
	No.	Cum %	No.	Cum %	No.	Cum %	No.	Cum %	No.	Cum %
2009	44	0.1	618	1.6	8950	23.9	20494	75	10074	100
2008	69	0.2	628	1.8	8348	23.6	19757	75.2	9494	100
2007	9	0	459	1.2	8760	24.6	18946	75.1	9339	100

- The number of candidates who obtained Merit decreased from 69 in 2008 to **44** in 2009.
- Out of the **44** Merits, **10** are from private centres.
- The number of candidates who obtained Merit to Grade C in 2009 is 30106. This is an increase of 1304 from 28802 in 2008
- The proportion of candidates awarded grades Merit to C shows a slight decline of 0.2% compared to 2008. The change is not significant and therefore overall performance of the 2009 is the same as that of the 2008 candidates.

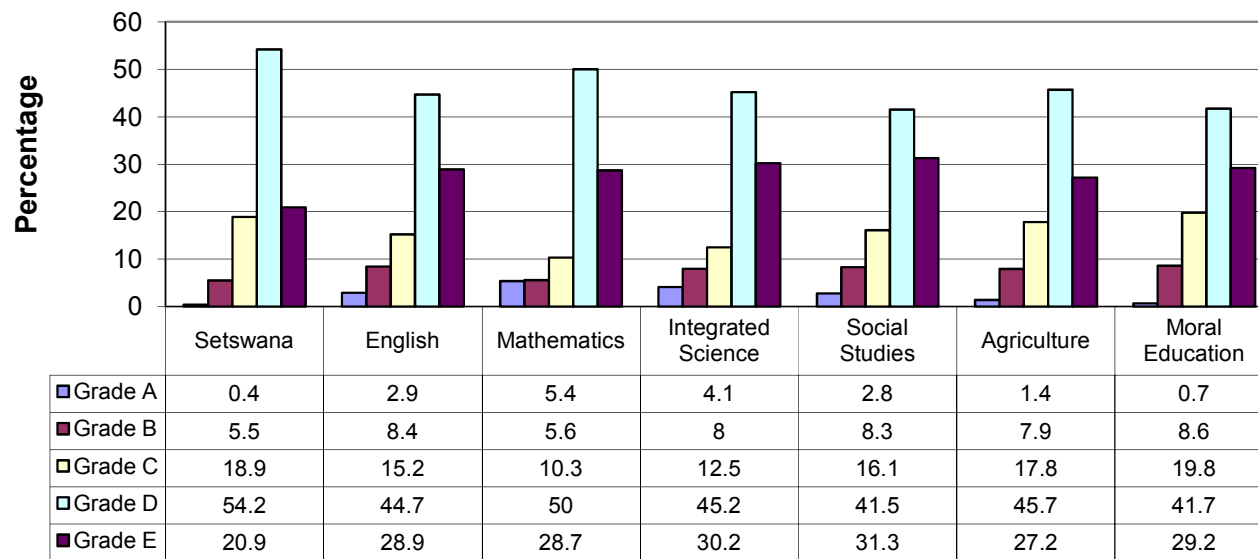
### 3.0: PERFORMANCE BY SUBJECT

**Table 3.1: Number and percentage of candidates awarded Grade C or better by subject 2009, 2008 and 2007**

SUBJECT	2009		2008		2007	
	NO	%	NO	%	NO	%
SETSWANA	9946	24.8	10149	26.5	10355	27.6
ENGLISH	10655	26.4	10279	26.7	10318	27.3
MATHEMATICS	8587	21.3	8403	21.8	8597	22.8
INTEGRATED SCIENCE	9365	24.6	8658	23.6	9104	25
SOCIAL STUDIES	1064	27.2	10136	26.4	10709	28.4
AGRICULTURE	10344	27.1	9378	25.6	10146	27.1
DESIGN & TECHNOLOGY	9487	25.4	2323	24.4	2409	25
HOME ECONOMICS	2641	27.0	2538	26.2	2734	28
COMMERCE & OFFICE PROCEDURES	1644	25.3	1506	26.7	1397	25.8
COMMERCE & BOOKKEEPING/ACCOUNTING	901	28.8	743	29.5	729	28.2
COMMERCE	355	20.4	287	22.2	242	24.7
BOOKKEEPING	34	18.8	46	17.4	37	21.6
OFFICE PROCEDURES	54	18.9	47	24.4	36	19.8
RELIGIOUS EDUCATION	6654	29.6	6390	28.5	6262	27.9
ART	2465	25.9	2478	26.1	2309	24.4
PRIVATE AGRICULTURE	453	20.6	349	19.7	307	23.1
GENERAL SCIENCE	377	17.2	307	17.4	265	19.7
MORAL EDUCATION	11728	29.1	10658	27.7	10998	29.3
FRENCH	391	23.6	196	24.3	173	22.5
MUSIC	326	25.7	141	24.4	145	27.3
PHYSICAL EDUCATION	3923	26.3	3754	25.6	3606	25.8

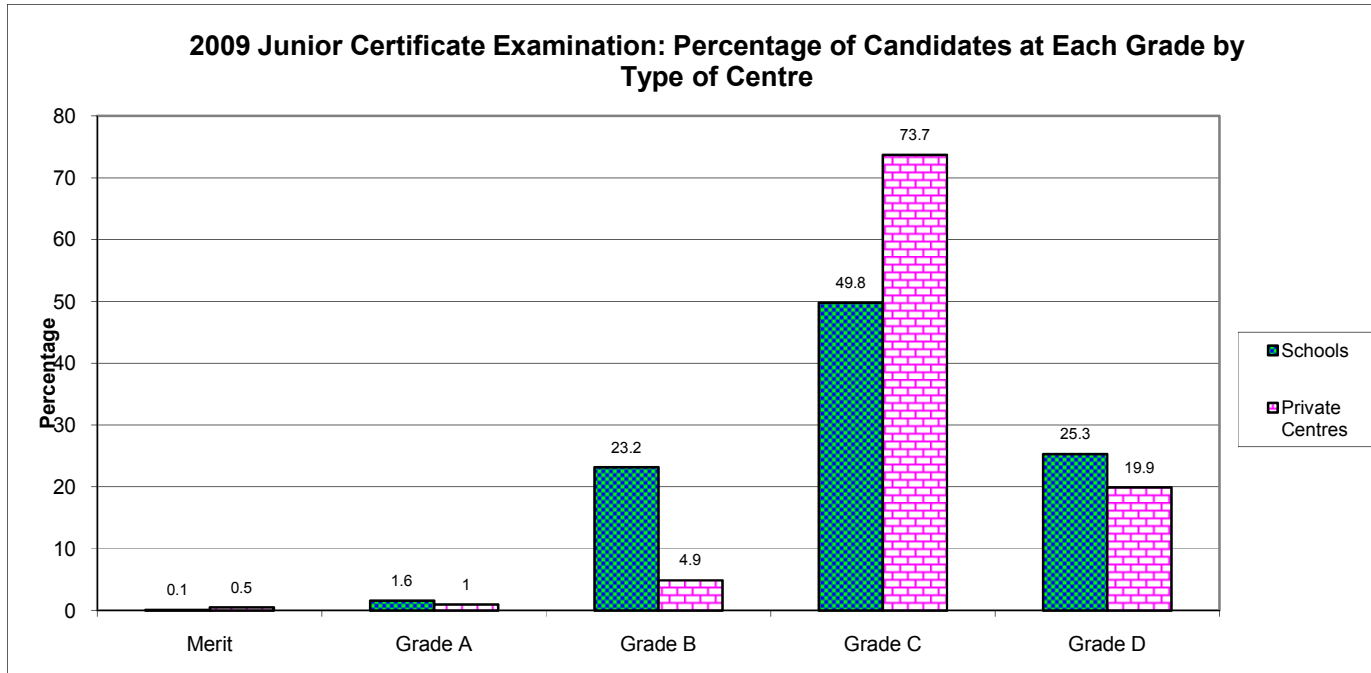


2009 Junior Certificate Examination: Percentage of Candidates at Each Grade in Core Subjects



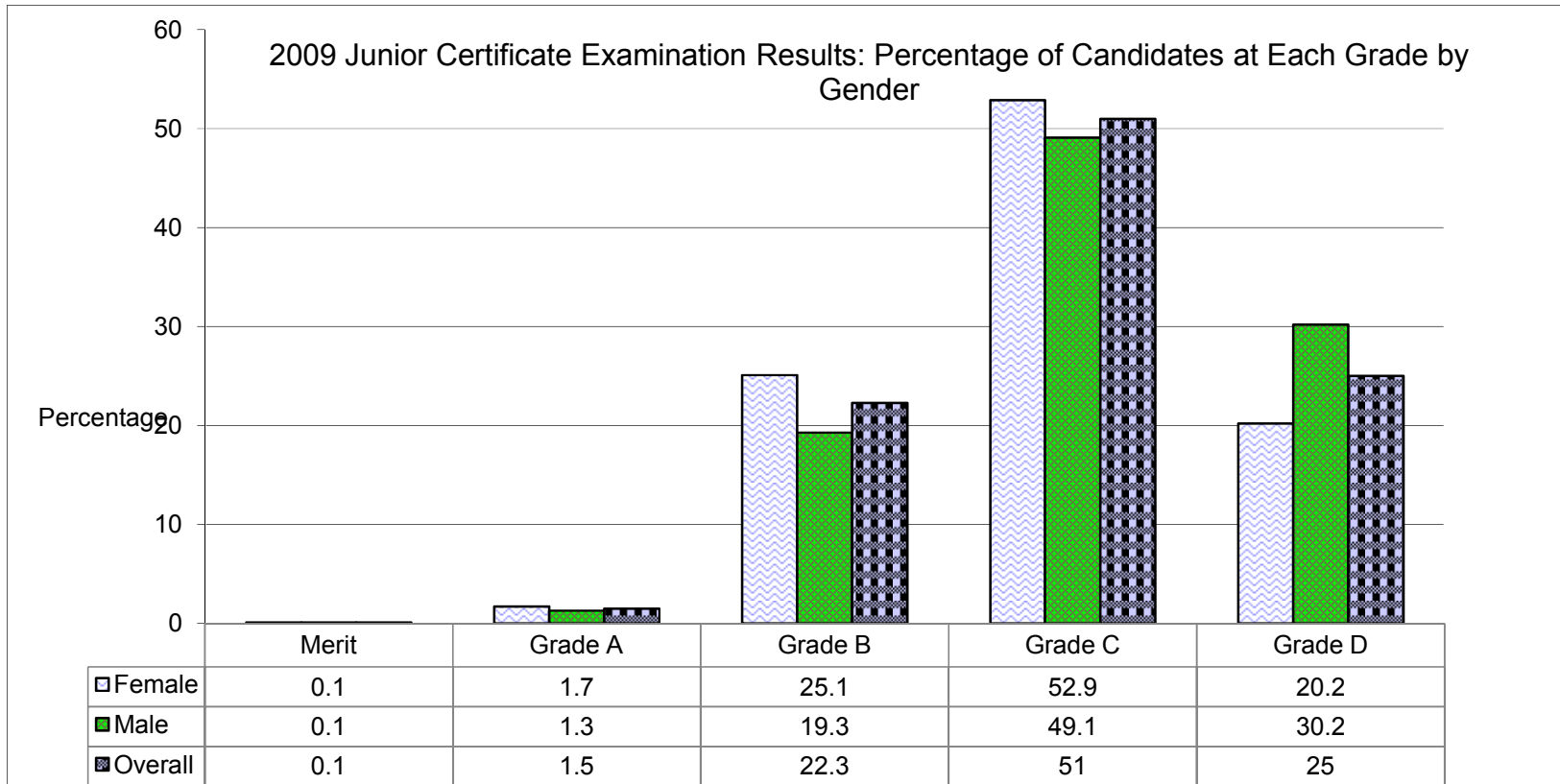
- ◆ Mathematics has the highest proportion of candidates awarded Grade A at 5.4% followed by Integrated Science with 4.1%
- ◆ Most learners (>70) obtain the lowest grade D – E in all the core subjects

4.0: PERFORMANCE BY TYPE OF CENTRE



- ◆ Overall, school centres performed better at grades A and B than candidates who registered in private centres.
- ◆ The proportion of candidates awarded a Merit grade in private centres (.5%) is higher than in school centres (.1%)

5.0: PERFORMANCE BY GENDER

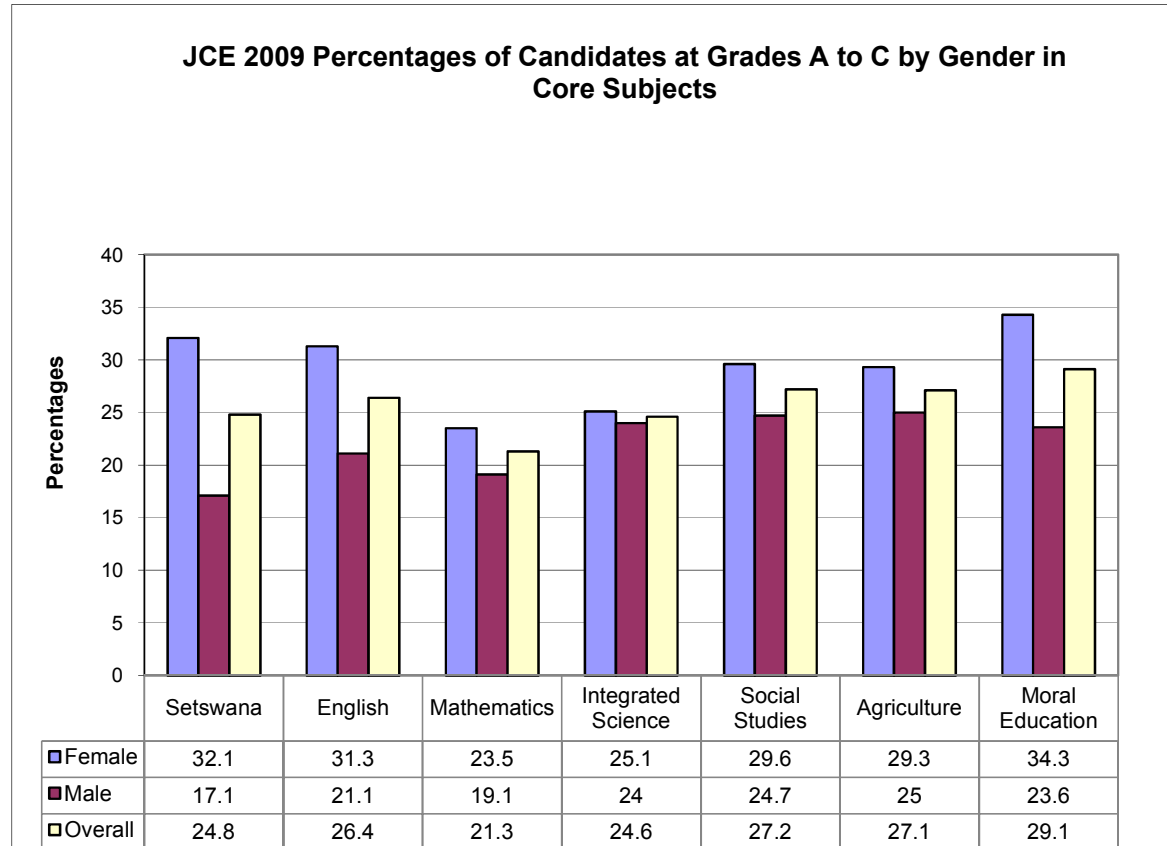


◆ The proportion of girls awarded Grade A – C is 74.9% and proportion of boys awarded is 69.5%

**2009 JCE RESULTS SUMMARY**

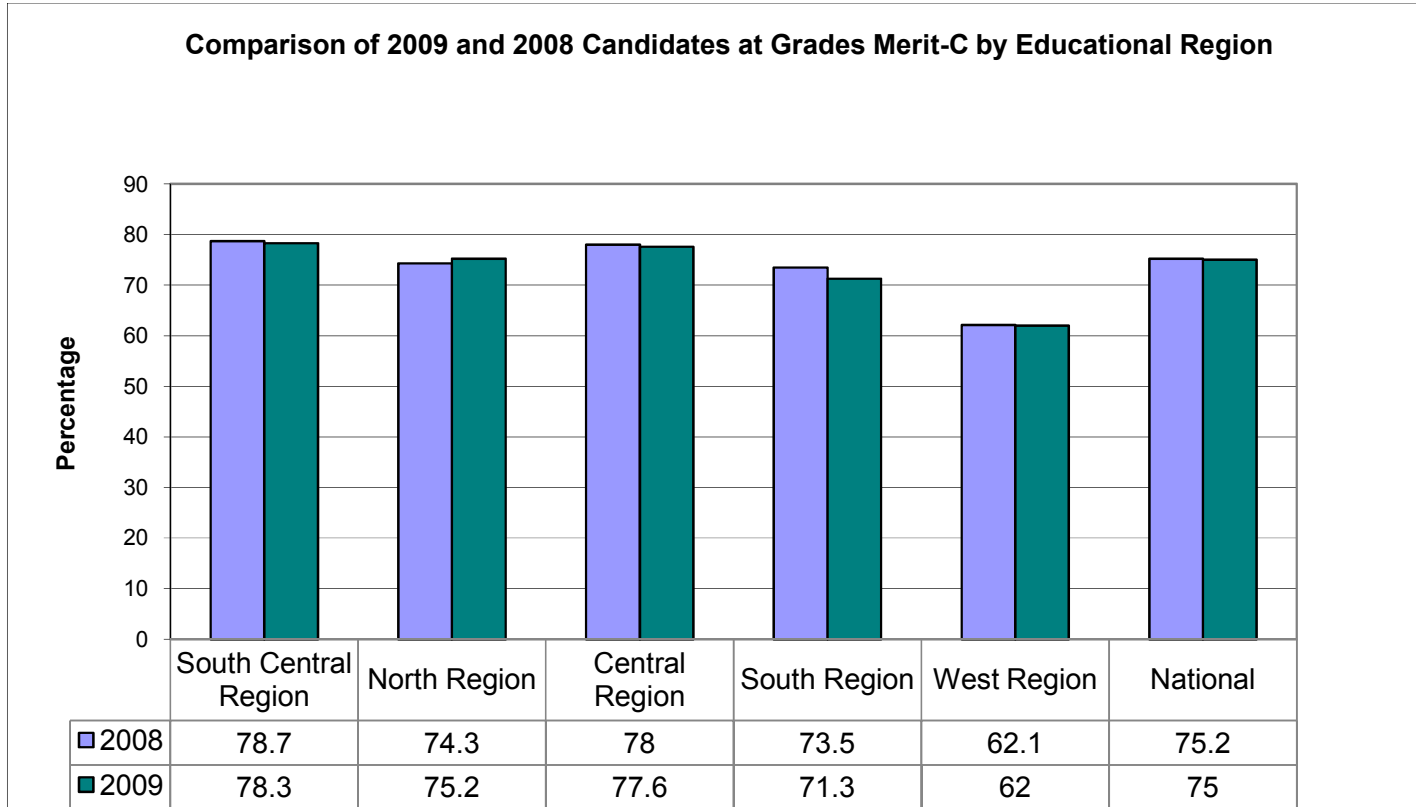
**Table 5.1: Percentage of candidates at each grade by subject and gender**

SUBJECT	FEMALE					MALE				
	A	B	C	D	E	A	B	C	D	E
SETSWANA	0.6	7.6	23.9	54.1	13.8	0.2	3.3	13.6	54.4	28.5
ENGLISH	3.9	10.2	17.2	46.8	21.8	1.7	6.2	13	42.5	36.4
MATHEMATICS	5.6	6.4	11.5	52	24.6	5.1	4.9	9.1	48	33
INTEGRATED SCIENCE	3.6	8.1	18.4	37.9	27	4.6	7.9	11.5	42.4	33.6
SOCIAL STUDIES	3.1	9.2	17.3	43	27.3	2.5	7.4	14.8	39.8	35.5
AGRICULTURE	1.4	8.6	19.2	47.5	23.3	1.5	7.2	16.3	43.8	31.2
DESIGN AND TECHNOLOGY	1.7	4	12.2	49.5	32.6	3.9	7.6	16.4	44.5	27.6
HOME ECONOMICS	1.6	8.7	18.9	46.9	23.8	0.6	3.9	8.8	41.2	45.5
COMMERCE AND OFFICE PROCEDURES	1.5	8.1	16.8	51.8	21.7	1.3	6.6	15.1	47.1	29.8
COMMERCE AND BOOKKEEPING/ACCOUNTING	0.2	8	22.4	47.2	22.2	0.5	5	20.1	41.6	32.9
COMMERCE	3.4	5.2	9.6	53.2	28.4	4.3	6.2	12.8	51.6	25.1
BOOKKEEPING	5.5	3.6	6.4	54.5	30	9.9	7	7	47.9	28.2
OFFICE PROCEDURES	2.7	4.4	8.2	56.8	27.9	6.8	5.8	12.6	53.4	21.4
RELIGIOUS EDUCATION	0.8	8.5	24.5	44.2	22.1	0.2	4.9	18.1	40.5	36.3
ART	1.3	5.2	17.3	49.5	26.8	2.5	6.8	17.4	46.5	26.8
PRIVATE AGRICULTURE	2.8	3.4	10.4	55	28.4	4.1	6.2	16	52.4	21.2
GENERAL SCIENCE	3.2	2.5	8.2	59.6	26.5	4.9	4.8	12.2	56.9	21.1
MORAL EDUCATION	0.9	10.9	22.5	42.2	23.5	0.5	6.2	16.9	41.3	35.2
FRENCH	7.1	9.1	15.8	46.6	21.4	3.3	3.4	6.3	41.7	45.4
MUSIC	1.7	7.5	19	52.6	19.2	2.4	5.7	15.5	44.6	31.8
PHYSICAL EDUCATION	1.6	6.5	14.5	48.4	28.9	2.1	8	18.4	49.1	22.4



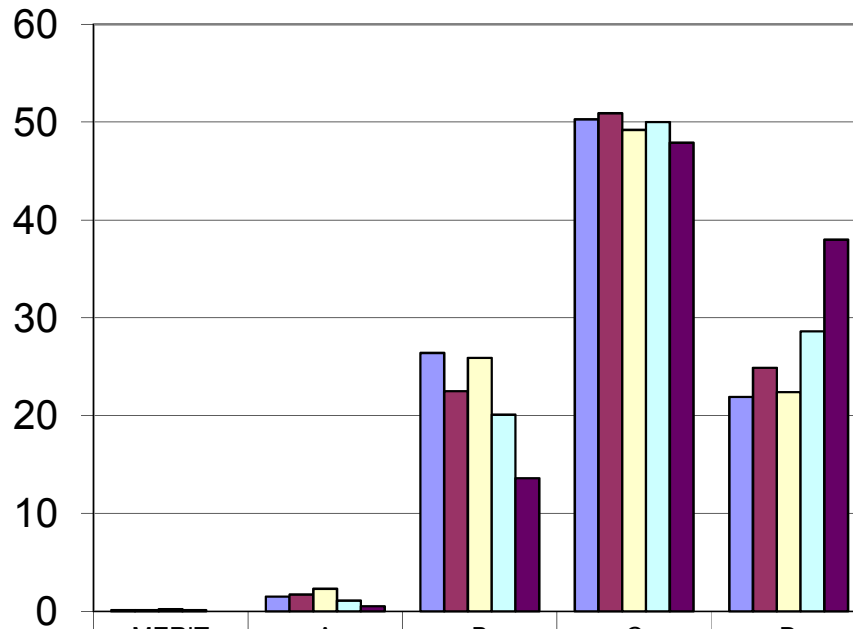
- ◆ Females performed better than males in all subjects.
- ◆ The difference is widest in Moral Education followed by Setswana and English.

6.0: PERFORMANCE BY EDUCATIONAL REGION



- ◆ Three regions namely South Central, North and Central performed above the national average of 75%

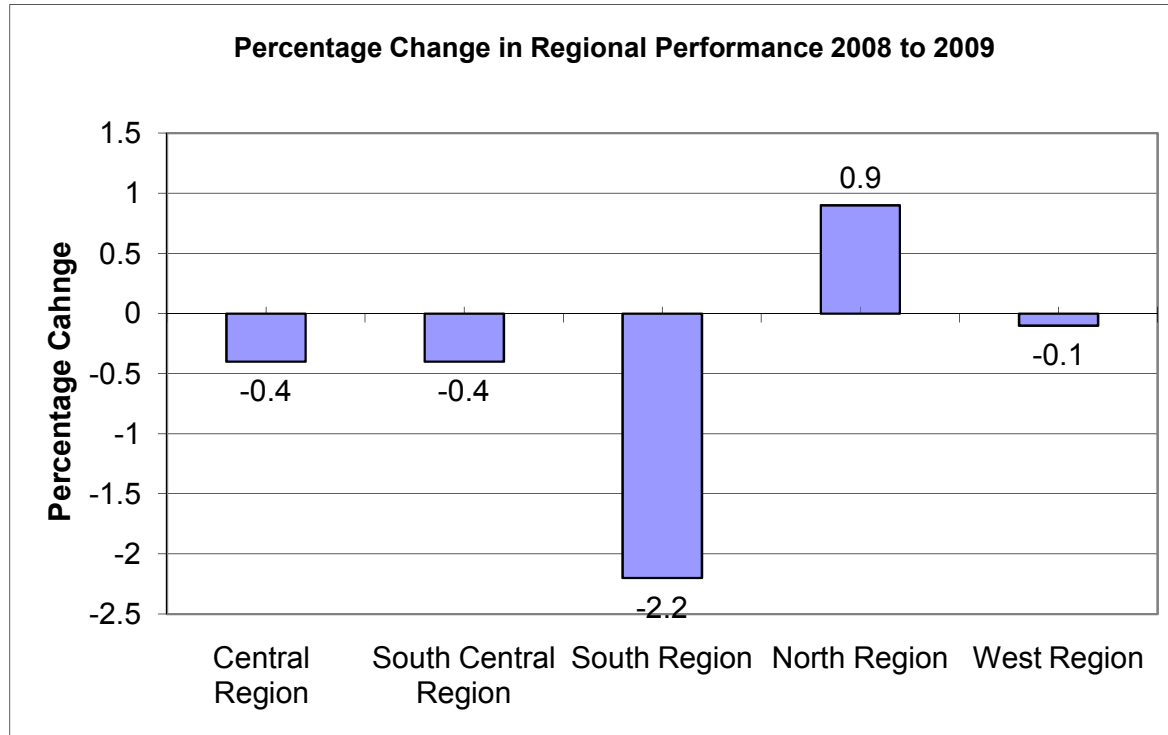
PERCENTAGE OF CANDIDATES AT EACH GRADE BY EDUCATIONAL REGION



■ South Central Region	0.1	1.5	26.4	50.3	21.9
■ North Region	0.1	1.7	22.5	50.9	24.9
■ Central Region	0.2	2.3	25.9	49.2	22.4
■ South Region	0.1	1.1	20.1	50	28.6
■ West Region	0	0.5	13.6	47.9	38

- ◆ Central Region has the highest proportion of Candidates awarded Merit and Grade A
- ◆ South Central has the highest proportion of candidates awarded grades Merit to C.





- ◆ North Region show improvement in performance compared to 2008 by 0.9%.
- ◆ The other four regions all show a decline in performance.