



BOTSWANA
EXAMINATIONS
COUNCIL

2012

**BOTSWANA GENERAL CERTIFICATE OF SECONDARY EDUCATION
SUMMARY OF RESULTS**

Introduction

- ❑ A total of 28 Botswana General Certificate of Secondary Education and five (5) other syllabuses from Cambridge International Examinations were examined.
- ❑ One (1) International General Certificate of Secondary Education (IGCSE) syllabus (French) was offered in six (6) government schools.
- ❑ Four General Certificate of Education (GCE) O-Level syllabuses – Statistics, Additional Mathematics, Christian Religious Education (CRE) and Religious Studies (Bible Knowledge) were available for all candidates.



BOTSWANA
EXAMINATIONS
COUNCIL

BGCSE Grading

- BGCSE examination is subject-based ;
- It is graded on an eight-point scale from A* to G;
- Candidates who fail to reach the minimum standard required for grade G are awarded grade U;
- Candidates for 0569 Science Double Award are awarded two grades (for example A*A*, AA, BB etc.).



BOTSWANA
EXAMINATIONS
COUNCIL

Candidature

- ❑ The total number of candidates who sat for the 2012 BGCSE was **31665** compared to **28702** in 2011.
- ❑ **23158** were in Government and Government-aided schools compared to **20 989** in 2011.
- ❑ **3116** in Private Schools compared to **1868** in 2011.
- ❑ **5,391** were private candidates compared to **5594** in 2011.
- ❑ **72** candidates whose results are withheld in one or more syllabuses are not included in the figures above.



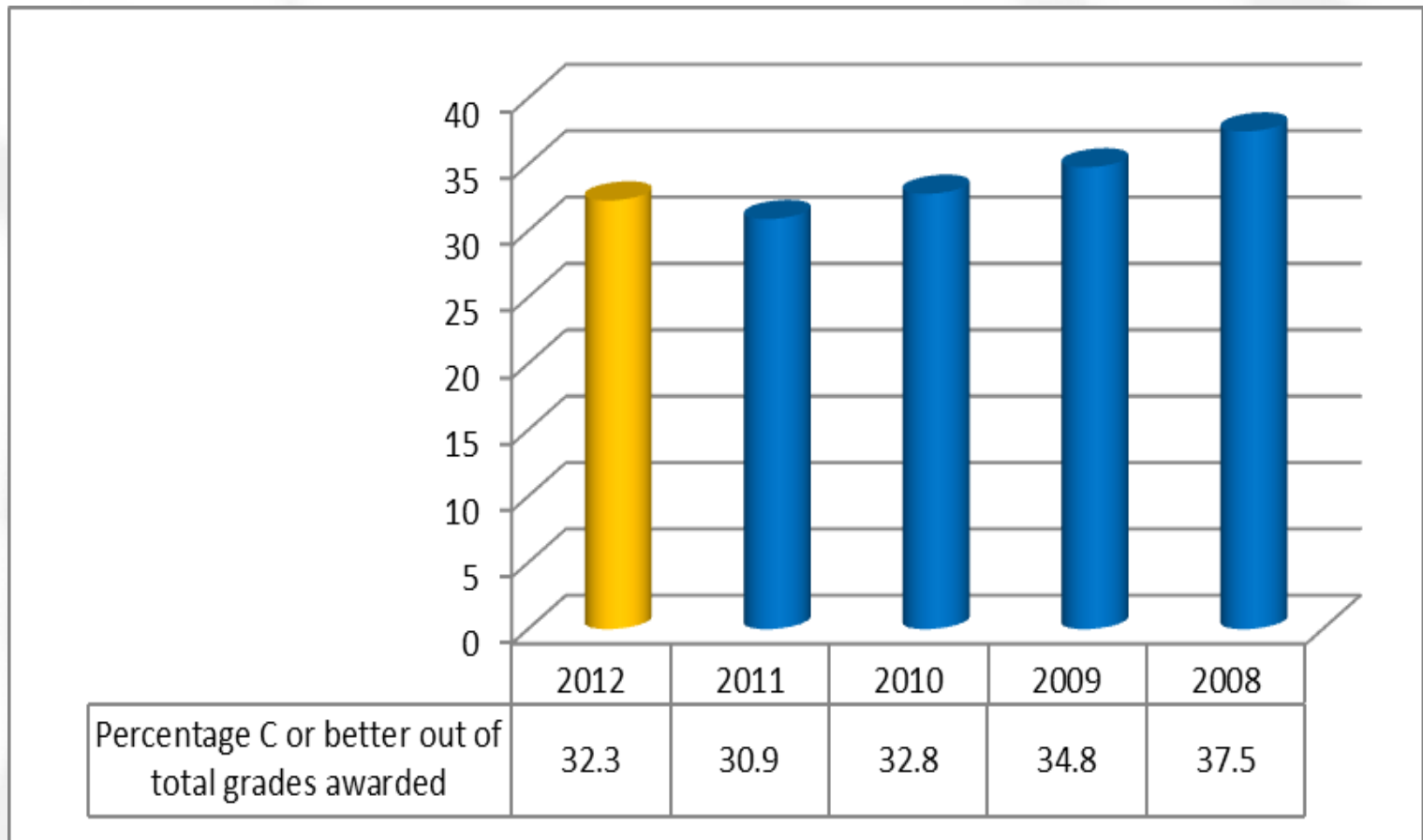
BOTSWANA
EXAMINATIONS
COUNCIL

Overall Performance

- 1. 204,050** grades (all syllabuses and all candidates included) were issued following the 2012 BGCSE examination compared to 211,618 in 2011;
 - Out of these **5,802** were grades A or A* which is about **0.03%** of the total grades awarded;
 - In 2012, the number of grades C or better issued were **65,798** which is **32.3%** of the total grades awarded;
 - In 2011, the number of grades C or better issued were **65,303** which is **30.9%** of the total grades awarded during that year;
 - This shows an increase of **1.4%** of grades C or better issued between 2011 and 2012.
- 2.** The number of candidates awarded 5 grade C's or better decreased from **6,027** in 2011 to **5,914** in 2012.
 - The percentage of candidates awarded 5 C's or better decreased by **3.18%**.

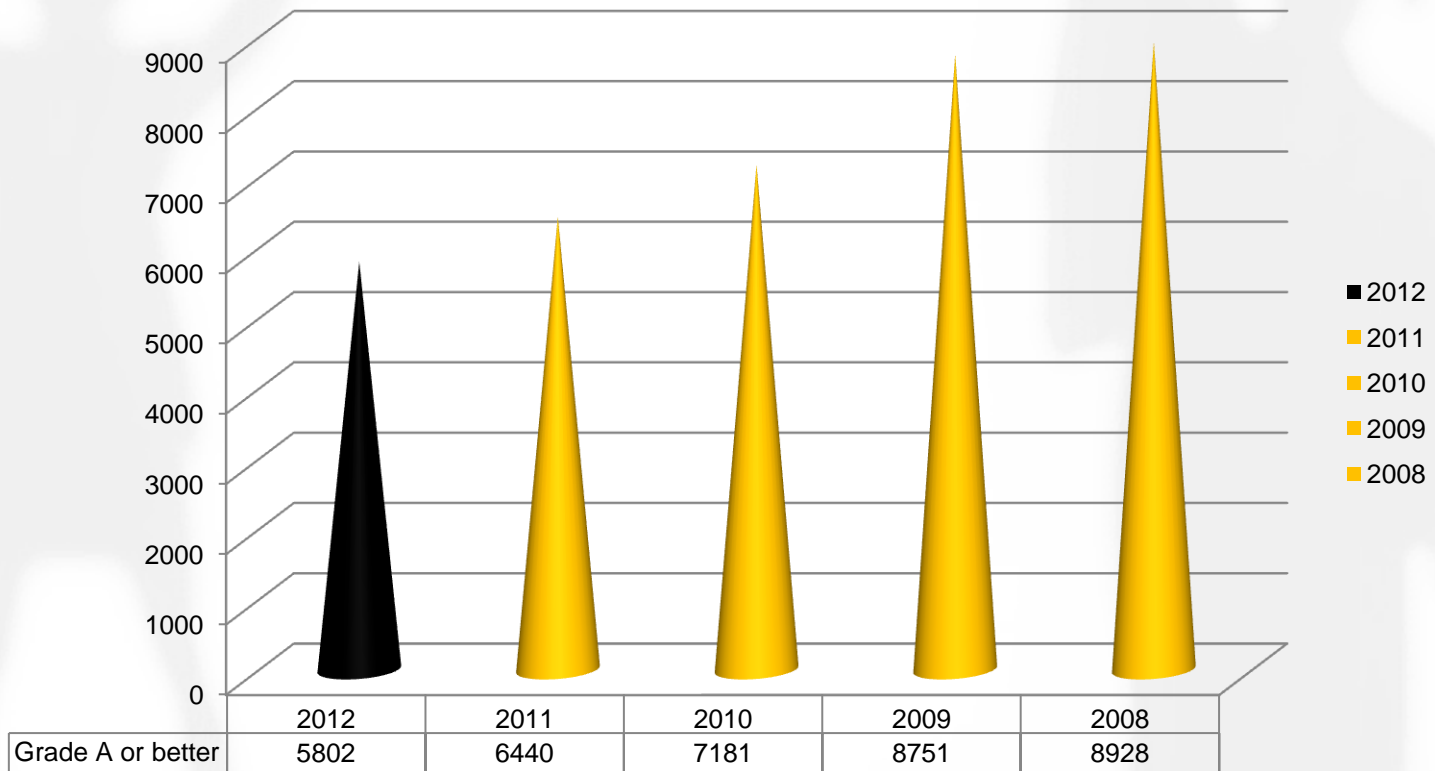


Percentage Grade C or better out of total grades awarded



An increase of 1.4% in C or better grades was observed between 2012 and 2011.

Grade A or better

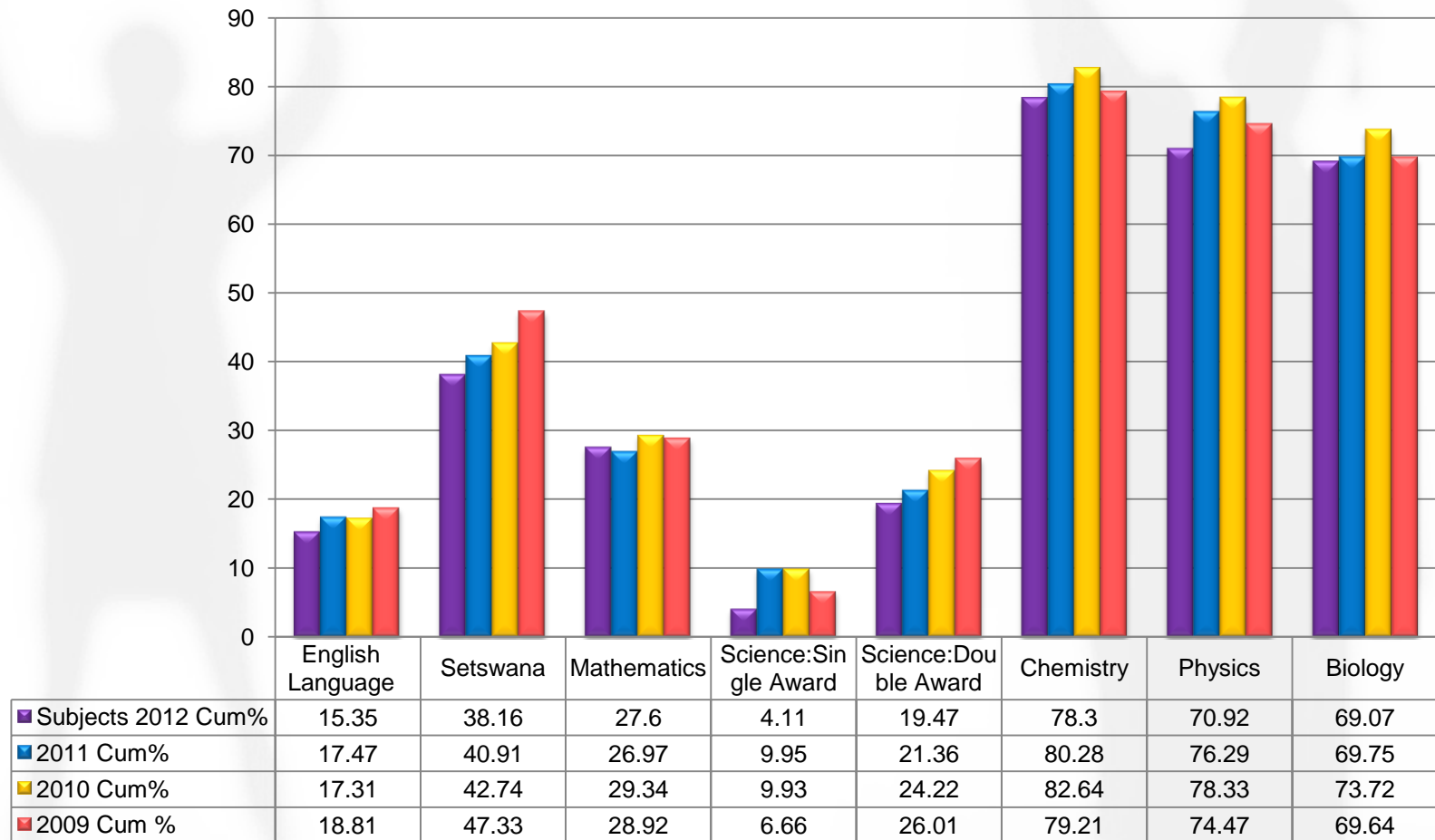


There is a decline in the number of grades awarded A or better.



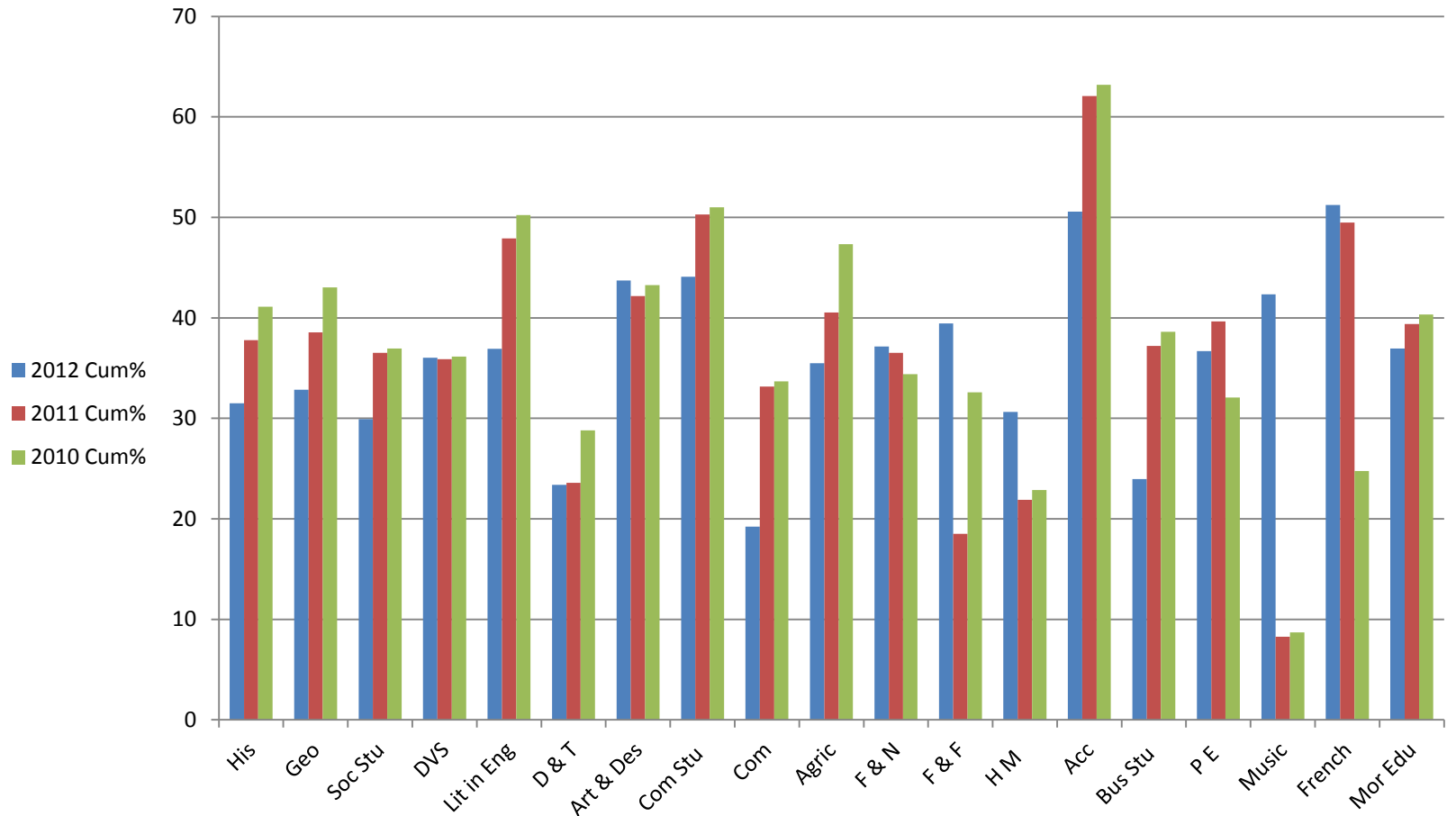
BOTSWANA
EXAMINATIONS
COUNCIL

Performance by BGCSE Core Syllabuses (Grade C or Better)



- Performance in all core syllabuses dropped between 2012 and 2011 except in Mathematics and Biology which remained about the same.

Performance by BGCSE optional syllabuses (Grades C or better)

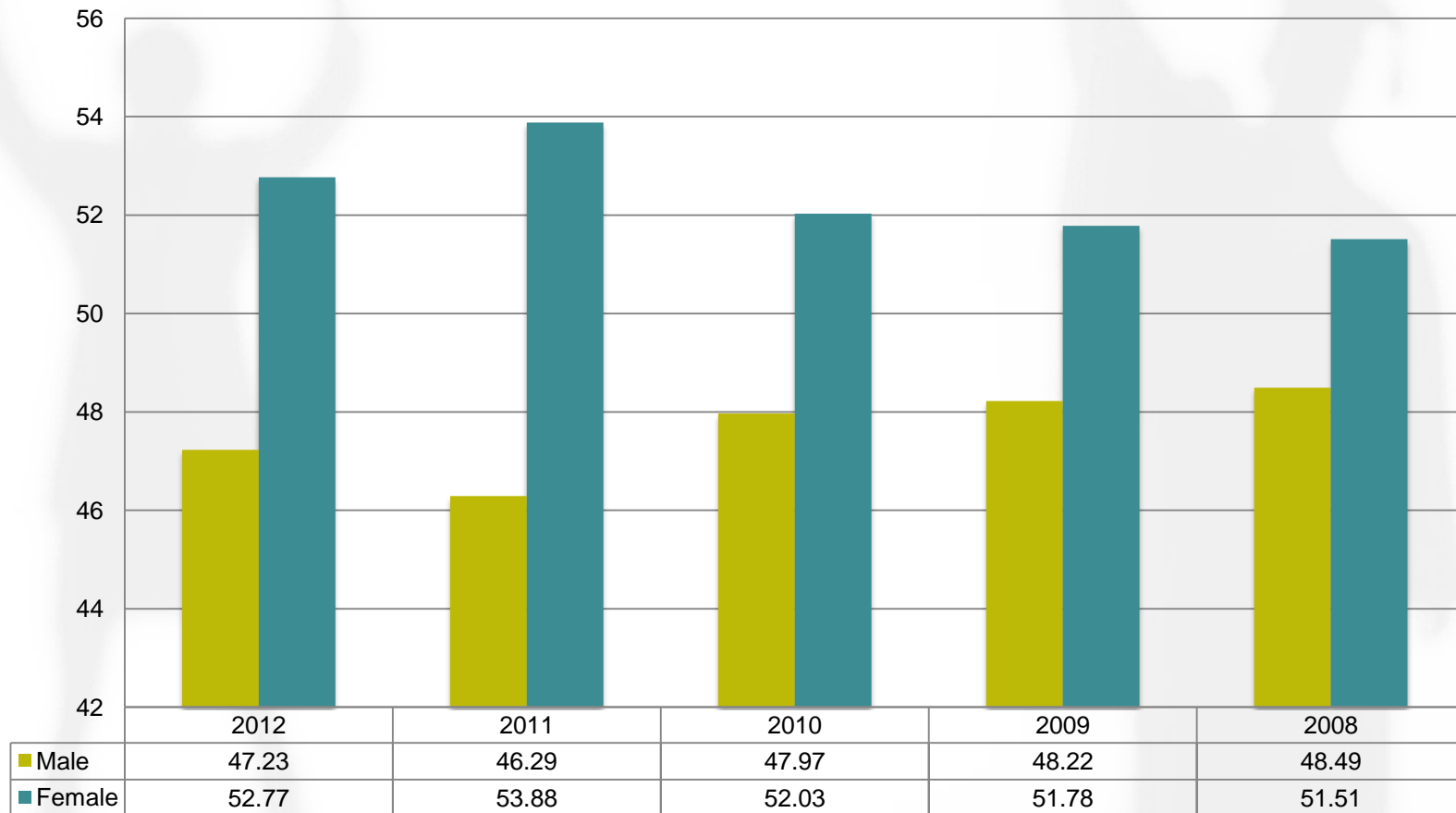


Performance in most optional syllabuses dropped between 2012 and 2011 except in Fashion and Fabrics, Food and Nutrition, Home Management, Music and French.



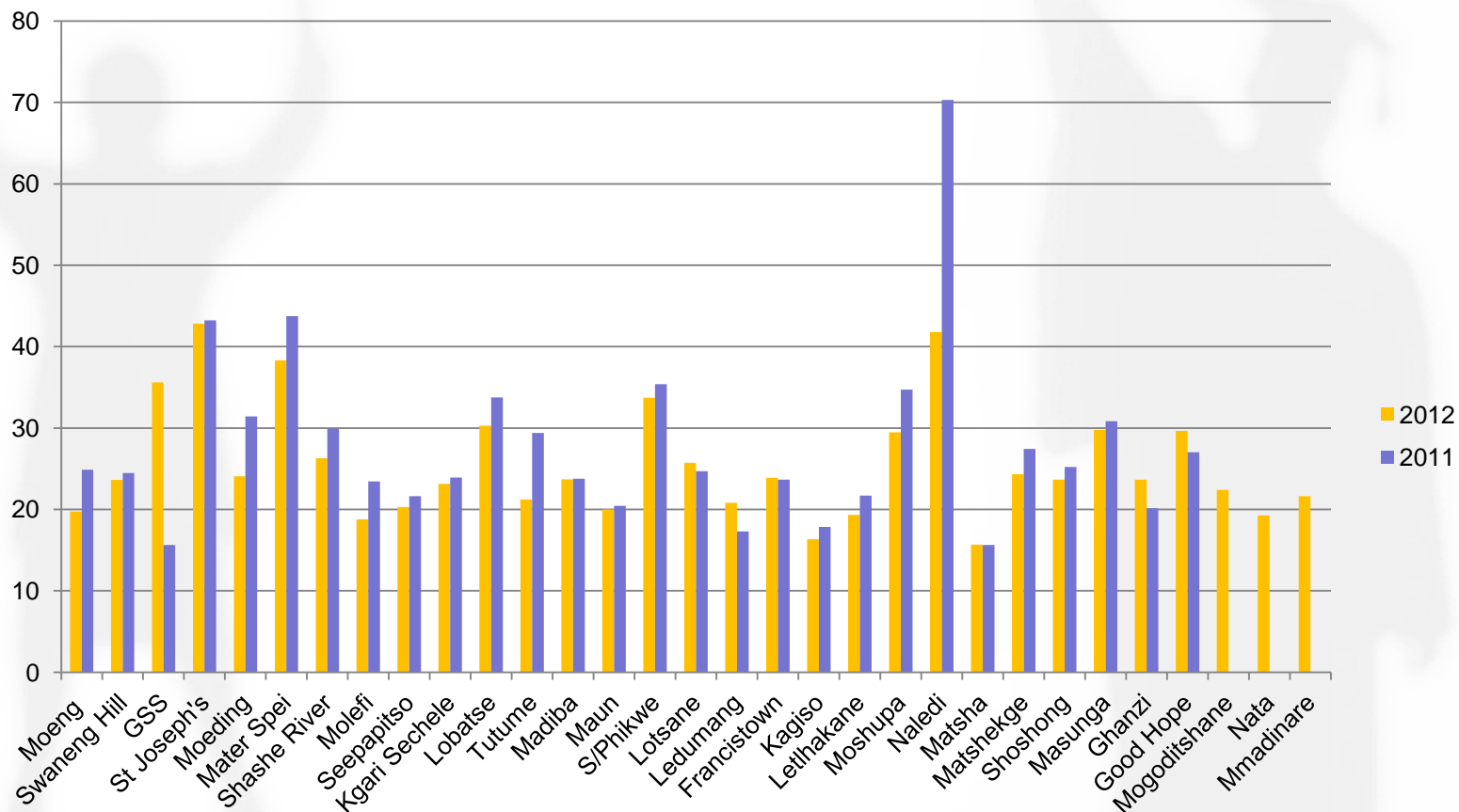
BOTSWANA
EXAMINATIONS
COUNCIL

Percentage of Male and Female Candidates awarded 5C'S or better



Performance of female candidates awarded 5 grade Cs or better in 5 syllabuses has dropped slightly from 2011, however females still outperform males.

Proportion of candidates awarded 5Cs or better in Government and Government aided schools



All schools were below 50%. Naledi and St Josephs reached at least 40% in the number of candidates who got 5 Cs or better in 5 syllabuses. Naledi has dropped drastically from 70% in 2011 to about 40% in 2012. GSS increased the proportion of candidates with 5Cs or better in 5 syllabuses from 15.61% in 2011 to 35.62% in 2012.



BOTSWANA
EXAMINATIONS
COUNCIL

Outstanding performance

The list below shows details of performance of the best candidates in the 2012 examinations based on candidates who obtained 6A*, 2A or better. This was done based on the best 8 subjects.

Centre No.	School	Grades
BW950	Good Hope	6A*, 3A
BW802	Gaborone Secondary School	6A*, 2A, 1B
BW803	St Josephs College	7A*, 2A,
BW821	Moshupa Senior Secondary School	6A*, 2A, 1C



BOTSWANA
EXAMINATIONS
COUNCIL

Summary of results

- ❑ The total number of candidates increased by 10% from 28702 in 2011 to 31665 in 2012. The increase was due to the introduction of the three new centres in 2011
- ❑ The percentage increase of grades C or better issued in the 2012 examination was **1.4%** compared to 2011.
- ❑ The percentage of candidates awarded 5 Cs or better decreased by **3.18%**. This indicates that the quality of performance has declined.
- ❑ In Government and Government-Aided schools, the number of grades C or better, for all syllabuses declined.
- ❑ At 5 Cs or better girls outperformed boys, however the boys still performed better than girls in the Science-related subjects.
- ❑ In almost all centres, the proportion of candidates awarded 5 Cs or better declined between 2011 and 2012 except for GSS, Ghanzi and Goodhope .

