



BOTSWANA
EXAMINATIONS
COUNCIL

2013

BOTSWANA GENERAL CERTIFICATE OF SECONDARY EDUCATION

SUMMARY OF RESULTS

Introduction

- A total of twenty-eight (28) Botswana General Certificate of Secondary Education (BGCSE) and three (3) syllabuses from Cambridge International Examinations were examined.
- One (1) of the CIE syllabuses (French) was from the International General Certificate of Secondary Education (IGCSE) syllabus.
- Two (2) of the CIE syllabuses (Statistics and Additional Mathematics) were from the General Certificate of Education (GCE) O-Level syllabuses.



BOTSWANA
EXAMINATIONS
COUNCIL

Introduction cont'd

- **BGCSE assessment is a combination of written examinations, practical examinations and coursework assessment totalling 87 papers.**
- **There were 55 written components, 9 multiple-choice papers, 13 coursework components and 10 practical examinations.**
- **All processing of the BGCSE syllabuses was done locally with the Malepa application.**
- **The CIE syllabuses were marked, graded and results processed by CIE.**



**BOTSWANA
EXAMINATIONS
COUNCIL**

Examination Administration

- **BGCSE examination was written from 7th October to 15th November 2013.**
- **Invigilation was carried out by practicing teachers.**
- **BEC employed Regional Examination Administrators to monitor the conduct of examinations by carrying out spot checks and inspections during the examination period.**
- **Coursework moderation started in September and ended in November 2013.**
- **Marking of the examinations was done from the 2nd to 24th December, 2013.**



**BOTSWANA
EXAMINATIONS
COUNCIL**

Access Arrangements and Special Considerations

- For the 2013 BGCSE there were 156 Special Needs candidates as compared to 112 in 2012; 67 of them applied for access arrangements while 89 applied for special consideration.
- Of the 67 cases that applied for access arrangements, only 54 were granted access.
- Of the 89 that applied for special consideration, 74 had provided supporting evidence and only 33 of them were considered while 41 were rejected.



BOTSWANA
EXAMINATIONS
COUNCIL

BGCSE Grading

- BGCSE examination is graded by subjects experts from BEC and Principal Examiners from secondary schools and tertiary institutions.
- The grading is validated by a Grading Advisory Committee which is comprised of BEC experts, a representative from Cambridge International Examinations (CIE), a representative from Curriculum Development and Evaluation and one member from Botswana College of Distance and Open Learning (BOCODOL).
- BGCSE is graded on an eight-point scale from A* to G.
- Candidates who fail to reach the minimum standard required for grade G are awarded grade U, however the grade U is not reported in the certificate. It only appears in the statement of results.
- Candidates for 0569 Science: Double Award are awarded two grades (for example A*A*, AA, BB etc.).



BOTSWANA
EXAMINATIONS
COUNCIL

Candidature

- The total number of candidates who sat for the 2013 BGCSE was 34 069 compared to 31663 in 2012.
- **24 494** were in Government and Government-aided schools compared to **23 157** in 2012.
- **2 421** were from Private Schools compared to **3116** in 2012.
- **7154** were private candidates compared to **5390** in 2012.
- **4055** out the 7154 private candidates were from the Back to School programme.
- Private candidates increased by **1764 (33%)**.



BOTSWANA
EXAMINATIONS
COUNCIL

Final Outcome

Six syllabuses showed significant improvement in cumulative percentages of candidates achieving grade C or better (Chemistry, Social Studies, Literature in English, Fashion & Fabrics, Home Management & Moral Education). Three syllabuses (Science: Double Award, Human and Social Biology and Development Studies) recorded significant declines of about 5%, 5% and 4% respectively. The outcome for Science Double Award is in line with the teachers' expectations as they forecast a decline of 4.57%. Fewer forecast grades were received for Development Studies to make any sound conclusions.



BOTSWANA
EXAMINATIONS
COUNCIL

Table 1: Performance by syllabus (2011 to 2013)

SYLLABUS	2011	2012	2013	Difference	
English Language	17.47	15.37	18.24	2.87	
Setswana	40.91	38.17	36.96	-1.21	
Mathematics	26.97	27.61	25.38	-2.23	
Science Single Award	9.95	4.11	3.80	-0.31	
Science Double Award	21.36	19.46	14.00	-5.46	
Chemistry	80.28	78.18	83.05	4.87	
Physics	76.29	70.92	71.27	0.35	
Biology	69.75	69.07	66.28	-2.79	
Human & Social Biology	12.98	14.46	9.21	-5.25	
History	37.77	31.51	32.96	1.45	
Geography	38.55	32.86	30.46	-2.40	
Social Studies	36.51	29.94	34.94	5.00	
Development studies	35.90	36.04	32.47	-3.57	
Literature in English	47.91	36.92	44.33	7.41	
Religious Education		45.27	42.55	-2.72	
Design & Technology	23.58	23.39	24.05	0.66	
Art & Design	42.18	43.71	45.28	1.57	
Computer Studies	50.29	44.08	46.53	2.45	
Commerce	33.17	19.23	18.26	-0.97	
Agriculture	40.52	35.50	36.98	1.48	
Food & Nutrition	36.15	37.15	35.60	-1.55	
Fashion & Fabrics	18.51	39.45	42.89	3.44	
Home Management	21.88	30.65	37.01	6.36	
Accounting	62.08	50.56	49.83	-0.73	
Business Studies	37.20	23.96	26.80	2.84	
Physical Education	39.64	36.72	36.11	-0.61	
Music	8.28	15.85	15.86	0.01	
Moral Education	39.39	36.96	40.09	3.13	
KEY					
Significant improvement		Slight Change		Significant Decline	

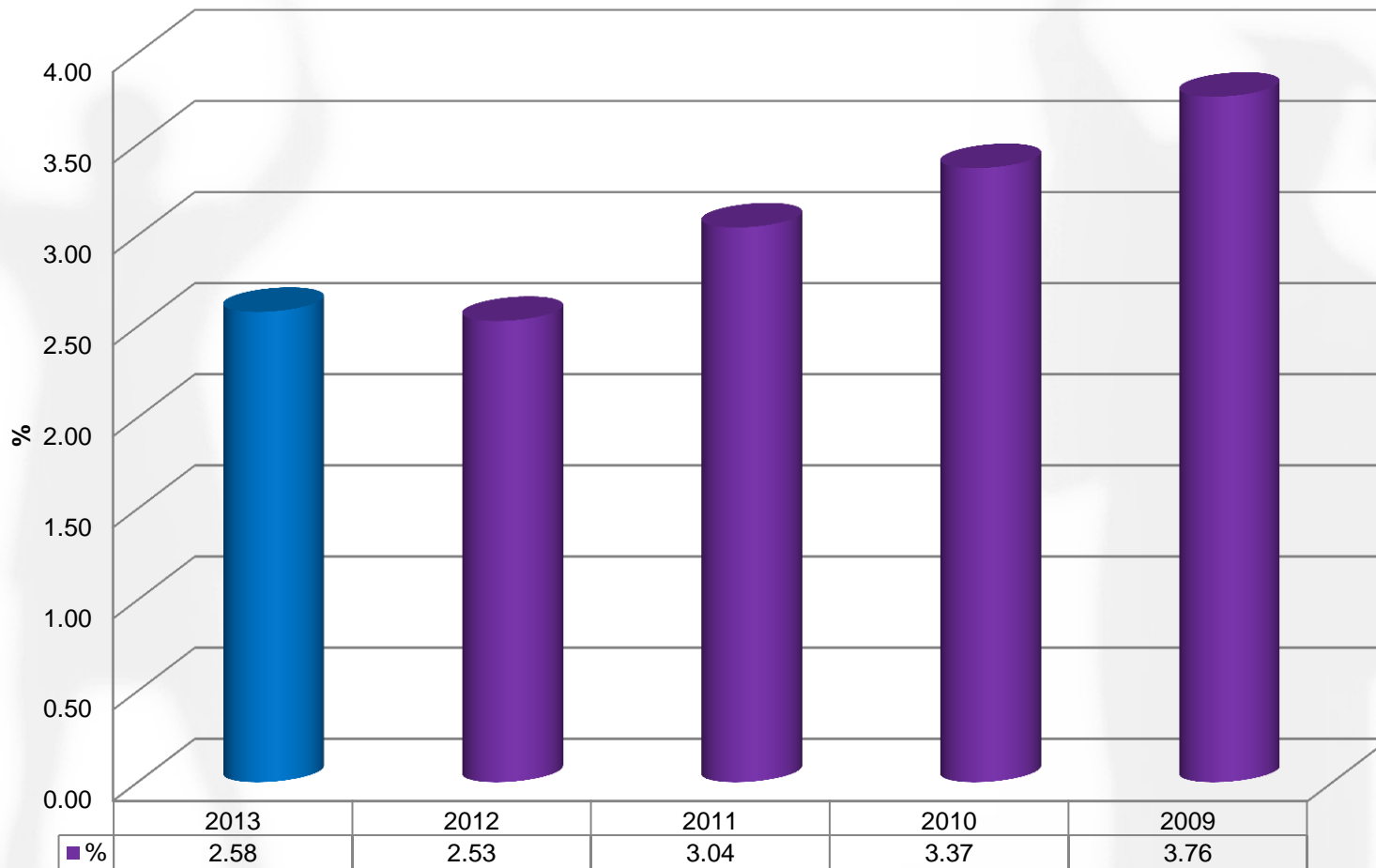


NOTE

With reference to the above table any change in cumulative percentage of candidates obtaining a key grade which is less than two (2%) compared to the previous year's figure is regarded as insignificant, hence performance across such years considered similar. The 2% figure represents a statistical margin of error and it is consistent with the Cambridge International Examinations (CIE) practice. Changes between 2% and 3% are considered slight while those over three 3% are considered significant.



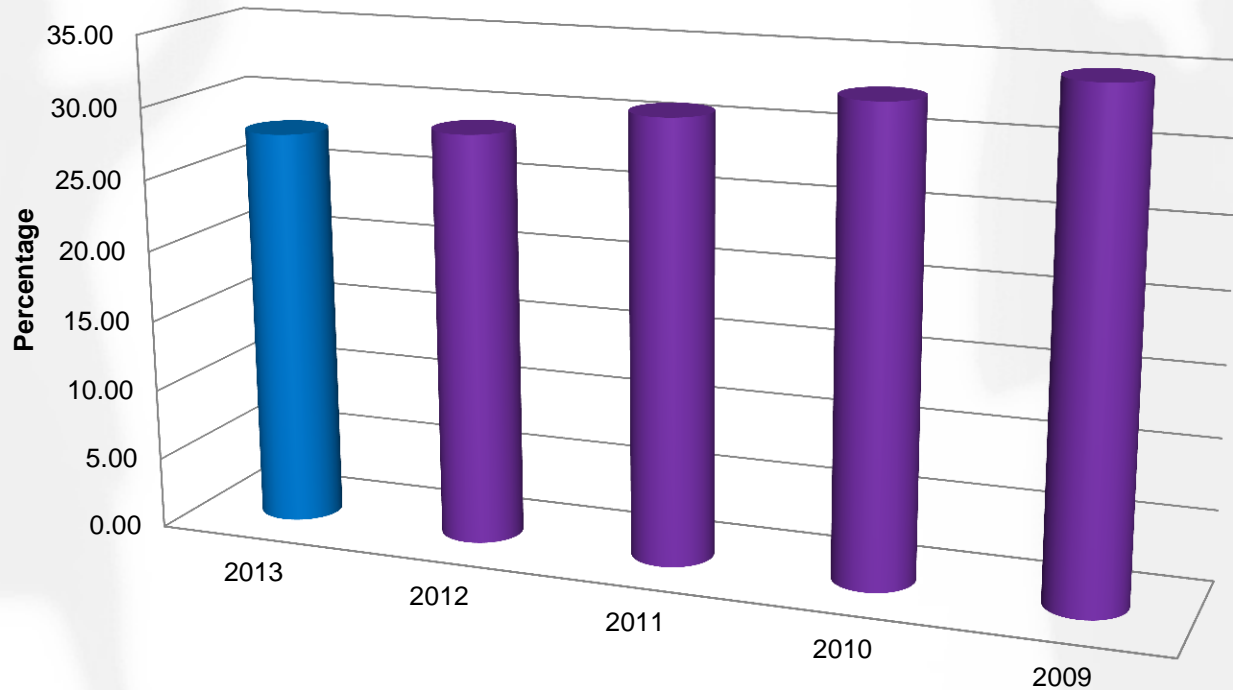
Fig. 1.0: Overall percentage of grades which are A or better



Proportion of grades that are A or better remained constant between 2013 and 2012.

Fig. 2.0: Overall percentage of grades which are C or better

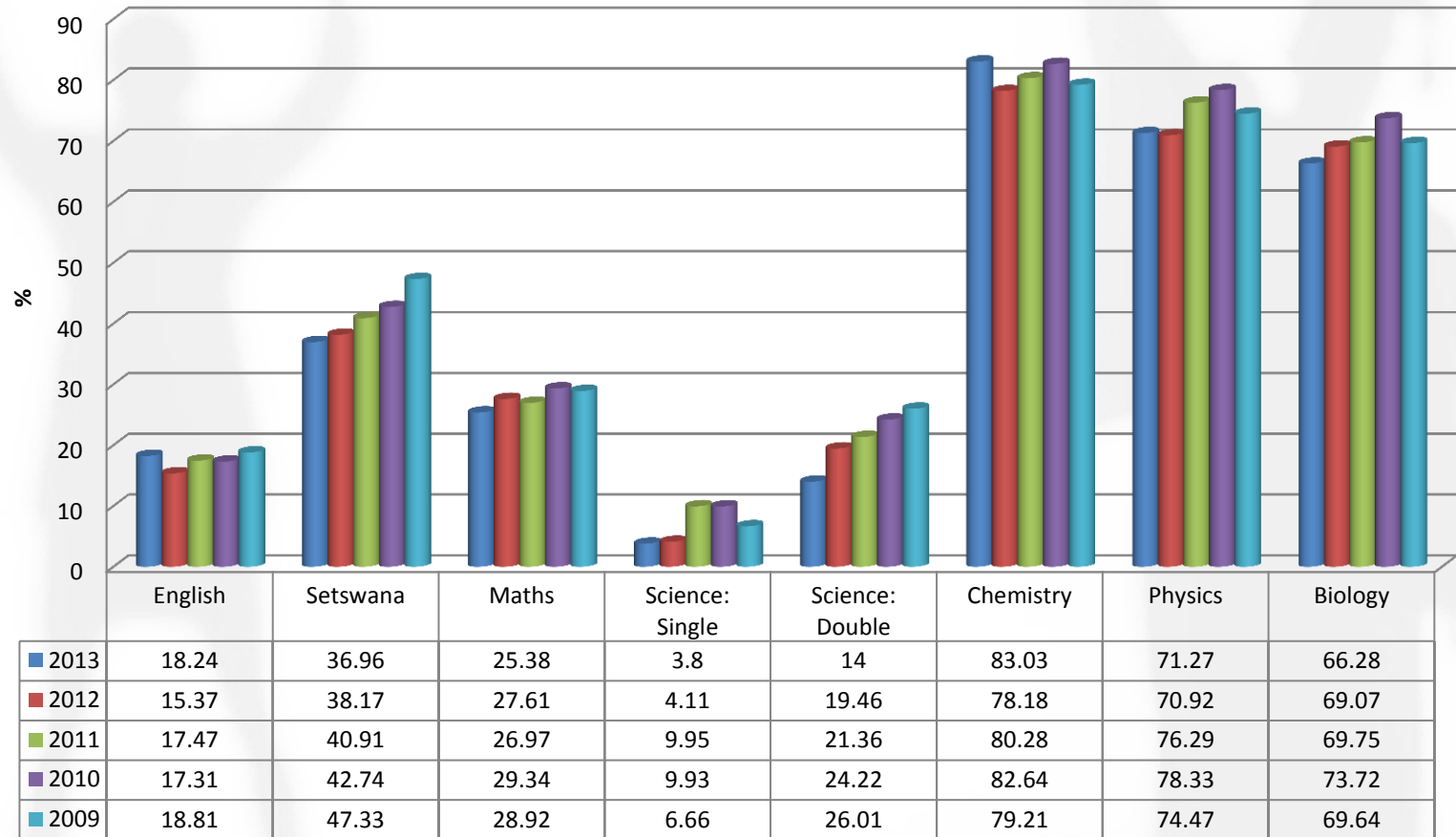
Fig. 2.0: Overall percentage of Grades which are C or better



	2013	2012	2011	2010	2009
■ %	27.91	28.82	30.86	32.76	34.75

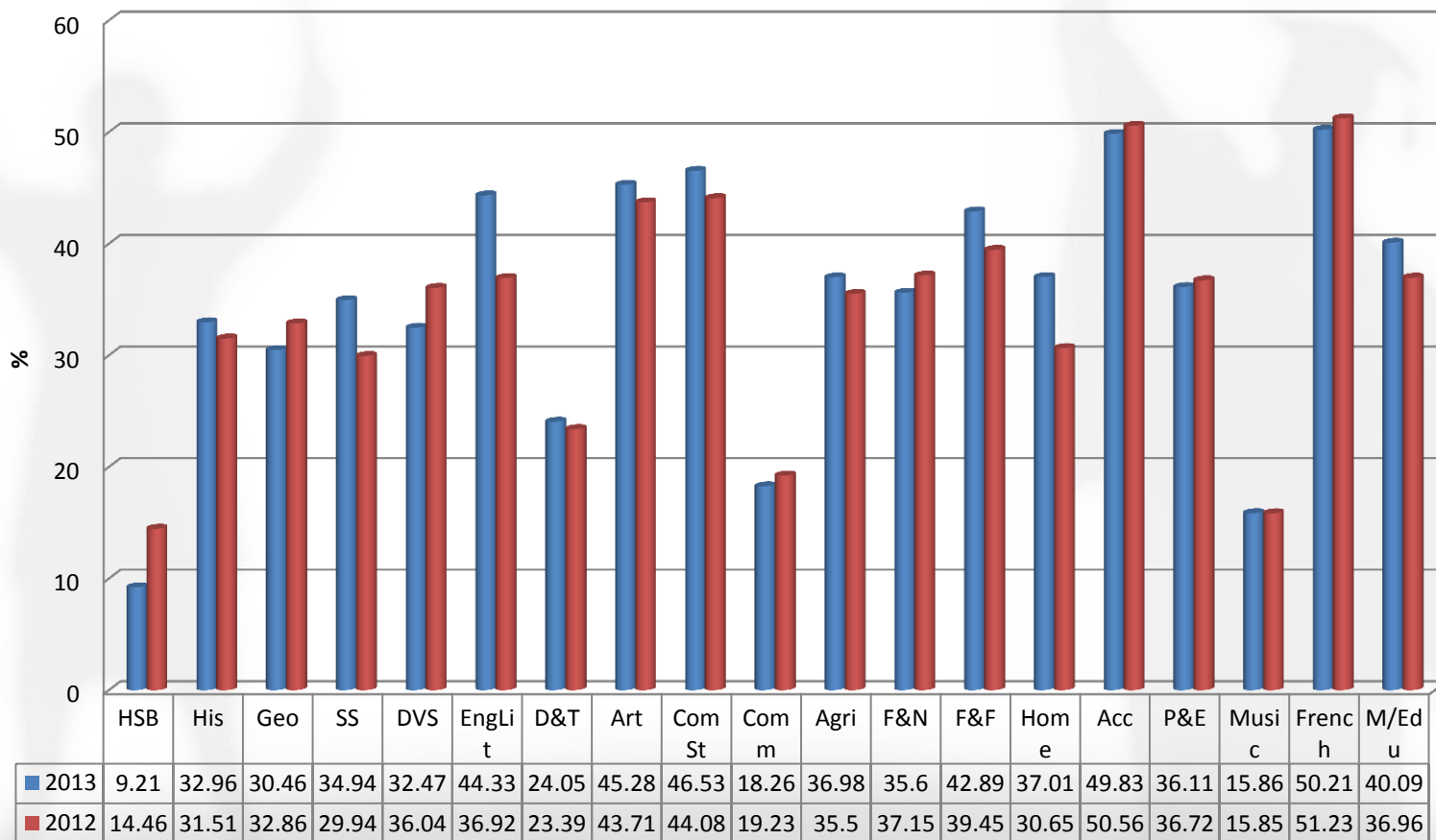
A decrease of 0.91% in Grades C or better was observed between 2013 and 2012.

Fig. 3.0: Percentage Performance by Core and Science syllabuses at Grade C or better



For core subjects (English, Setswana and Mathematics), only English improved slightly in 2013 as compared to 2012 while Setswana and Mathematics have shown slight decline. Among the Science subjects, Chemistry showed significant improvement while performance in Physics remained constant between 2013 as in 2012. The rest of the sciences have shown decline in performance.

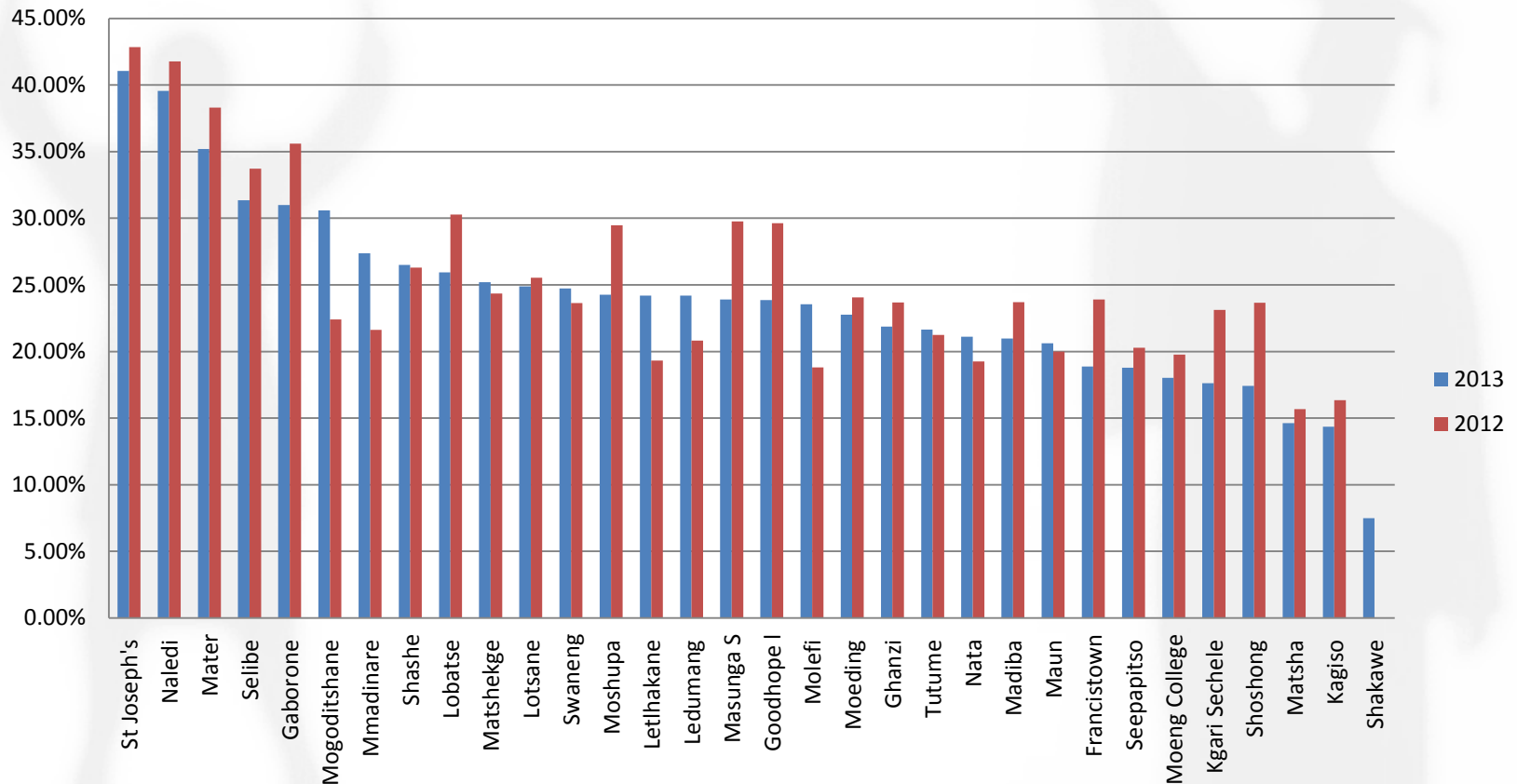
Fig. 4.0: Percentage performance in other syllabuses at Grade C or better



Performance improved or remained constant in most of optional syllabuses between 2013 and 2012. Significant declines were observed in HSB and Dev. Studies, while slight declines were observed in Geography, Commerce, and Food and Nutrition.



Fig. 5.0: Proportion of candidates awarded Grade 5C's or Better in Government and Government Aided Schools



BOTSWANA EXAMINATIONS COUNCIL

All Government centres except for St. Joseph's College achieved below 40% in the number of candidates who got 5 Cs or better. There is a general drop on the proportion of candidates who achieved 5Cs or better. However, note that the new centres (Mogoditshane, Nata and Mmadinare have achieved significant improvement between 2013 and 2012.

Fig. 2.0: Outstanding performance

Centre No.	School	Grades
BW805	Materspei College	6A* , 2A ,1B
BW950	Goodhope Senior Secondary School	7A* , 2A
BW814	Maun Senior Secondary School	7A* , 2A, 1B
BW826	Masunga Senior Secondary School	6A* , 2A, 1B
BW822	Naledi Senior Secondary School	6A* , 3A, 1D 6A* , 2A, 1B

The list above shows details of performance of the best candidates in the 2013 examinations based on candidates who obtained 6A* , 2As or better. This was done based on the best 8 subjects. However it is important to note that there are other high performing students with A*s who did not meet the 6A*and 2As cut point, they are rightly acknowledged in other reports..

Summary of results

- The total number of candidates increased by 7.59% from 31665 in 2012 to 34 069 in 2013. The increase was due to the introduction of the one new centre (Shakawe Senior School) and an increase in the number of private candidates, a part of whom are the Back to School Candidates.
- A decrease of 0.91% in the proportion of grades C or better was observed in 2013 compared to 2012.
- The total percentage of candidates awarded 5 C's or better decreased slightly from 25.54% in 2012 to 24.27% in 2013, (1.27% decline).
- There is a general drop on the proportion of candidates who achieved 5Cs or better in most centres between 2012 and 2013.
- Mogoditshane, Nata, Mmadinare, Letlhakane, and Ledumang showed improved results (5Cs or better).
- Shakawe SSS has recorded the lowest performance (7.48% of 5Cs or better).



BOTSWANA
EXAMINATIONS
COUNCIL