



BOTSWANA  
EXAMINATIONS  
COUNCIL

JUNIOR CERTIFICATE EXAMINATIONS

**2012 RESULTS SUMMARY**



## 2012 JCE RESULTS SUMMARY

Botswana Examinations Council (BEC) introduced standard-based grading for the 2012 Junior Certificate Examinations (JCE). All syllabuses are graded using this procedure, however, for the award of a JCE qualification; candidates are graded on 7 syllabuses as follows:

- Candidates taking Setswana require a minimum of seven syllabuses, which must include English, Setswana, Mathematics, Integrated Science, at least one syllabus from the optional group and the best two from the remaining syllabuses.
- Candidates exempted from Setswana must also have a minimum of seven syllabuses, which include English, Mathematics, Integrated Science, at least one syllabus from the optional group and the best three from the remaining syllabuses.
- Private candidates who sit between one and six syllabuses in any given year can be considered for the award of an overall grade after they have completed seven syllabuses in a maximum of 5 consecutive years.

Candidates were examined on 20 syllabuses through 32 written, 12 multiple choice and 11 course work/practical components. Out of these syllabuses, 4 were available only for private candidates. Beginning 2012, candidates were examined on the revised curriculum that was implemented in 2010. The main thrust of the new curriculum is to provide learners with pre-vocational preparation through knowledge and selected practical experiences as well as building a foundation that enables individuals to cultivate manipulative ability, positive work attitudes and ultimately making informed choices for future careers. In response to this, BEC developed new sets of assessments aimed at supporting the new curriculum by bringing out of the learners important skills which will position the candidates for the world of work and vocational preparedness as well as preparing them for long life learning.

## 2012 JCE RESULTS SUMMARY

A total of 206 school centres and 45 private centres registered candidates for the 2012 JCE. The JCE examination papers were administered from 22<sup>nd</sup> October to 6<sup>th</sup> November 2012. Marking of examination scripts started on 26 November 2012 and was completed on the 12<sup>th</sup> of December 2012.

The 2012 JCE Summary Results Report is structured as follows: -

- ◆ Candidature
- ◆ Overall Performance
- ◆ Performance by Subject
- ◆ Performance by Gender
- ◆ Performance by Education Region

# 2012 JCE RESULTS SUMMARY

## 1.0 CANDIDATURE

SUBJECTS	2012			2011			2010		
	All	Male	Female	All	Male	Female	All	Male	Female
<b>Setswana</b>	38252	19223	19029	39177	19125	20052	40037	19457	20580
<b>English</b>	38497	19358	19139	39456	19250	20206	40360	19613	20747
<b>Mathematics</b>	38492	19357	19135	39457	19249	20208	40359	19611	20748
<b>Integrated Science (Incl. Gen Sci.)</b>	38494	19357	19137	39478	19262	20216	40318	19589	20729
<b>Social Studies</b>	38494	19357	19138	39471	19254	20217	40311	19576	20735
<b>Design &amp; Technology</b>	11184	8881	2303	11348	7922	3426	9487	7083	2404
<b>Agriculture (Incl. Pvt. Agric.)</b>	38496	19359	19137	39490	19263	20225	40301	19583	20718
<b>Home Economics</b>	10141	2309	7832	9124	1442	7682	9793	1423	8370
<b>Business Subjects</b>	14008	6157	7849	10929	4023	6906	11846	3371	7475
<b>Religious Education</b>	17936	7217	10746	21701	8728	12973	22493	8917	13576
<b>Art</b>	9306	6427	2879	8807	6219	2588	9533	6880	2653
<b>Moral Education</b>	38494	19357	19137	39496	19266	20230	40275	19571	20704
<b>French</b>	1675	731	944	1628	703	924	1659	734	925
<b>Music</b>	1687	816	870	1702	931	771	1267	679	588
<b>Physical Education</b>	11462	6412	5050	14539	8939	5600	14936	9281	5655
<b>Total Candidature</b>	<b>38497</b>	<b>19358</b>	<b>19139</b>	<b>39374</b>	<b>19211</b>	<b>20163</b>	<b>40180</b>	<b>19518</b>	<b>20624</b>

## 2012 JCE RESULTS SUMMARY

- The total number of candidates who satisfied the requirements of the 2012 Junior Certificate Examination (JCE) is **38497**.
- There were **19358** male candidates, **19139** female candidates.

### 2.0 OVERALL PERFORMANCE

#### 2012 JUNIOR SECONDARY EXAMINATION RESULTS

##### Candidature:

Merit	5	0.0%
A	590	1.5%
B	4745	12.4%
C	10386	27.1%
D	13641	35.6%
E	4889	12.7%
U	4093	10.7%

## 2012 JCE RESULTS SUMMARY

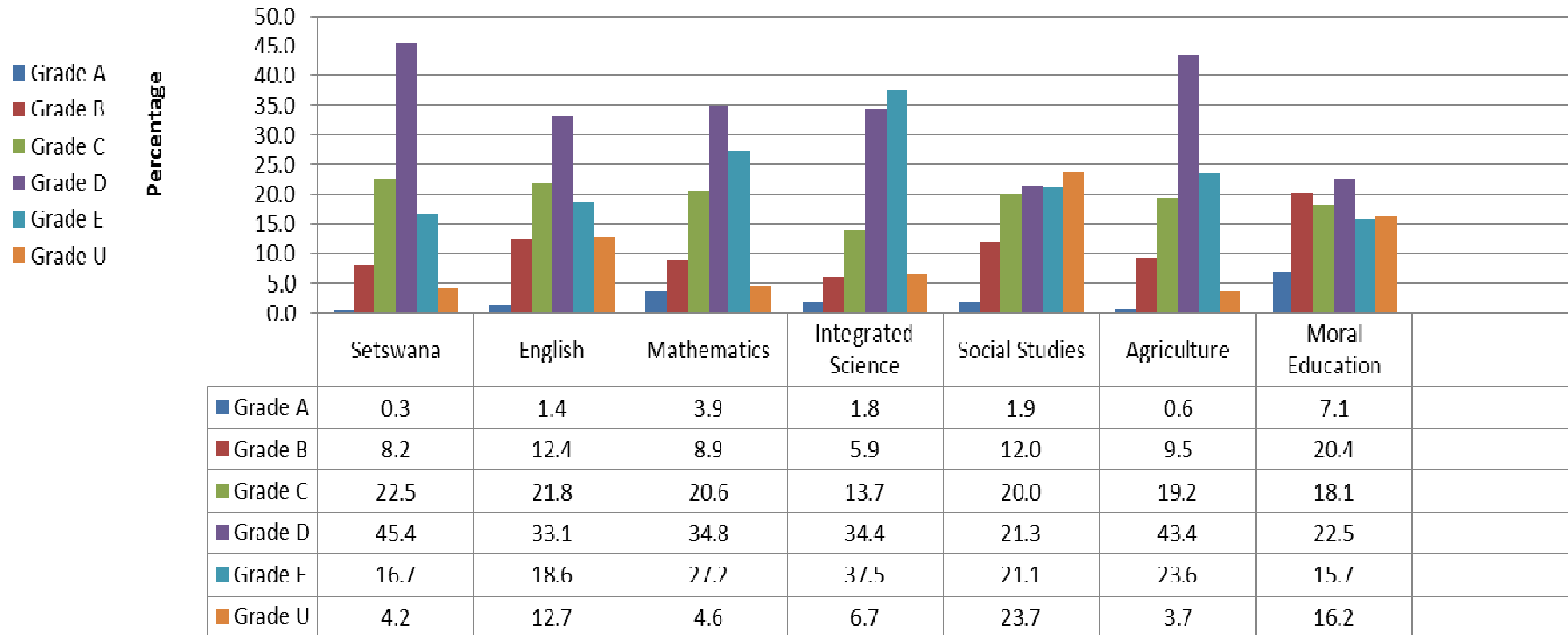
### 3.0: PERFORMANCE BY SUBJECT

Number and percentage of candidates awarded Grade C or better by subject 2012

	NO	%
SETSWANA	11790	30.9
ENGLISH	13634	35.6
MATHEMATICS	12756	33.3
INTEGRATED SCIENCE	7988	21.4
SOCIAL STUDIES	13011	33.9
AGRICULTURE	10951	29.3
DESIGN & TECHNOLOGY	1279	11.4
HOME ECONOMICS	3564	35.2
COMMERCE & OFFICE PROCEDURES	1070	14.1
COMMERCE & ACCOUNTING	1518	28.6
RELIGIOUS EDUCATION	5276	29.5
ART	4961	53.3
PRIVATE AGRICULTURE	36	3.5
GENERAL SCIENCE	94	10.2
MORAL EDUCATION	17495	45.6
FRENCH	189	11.3
MUSIC	314	18.7
PHYSICAL EDUCATION	1880	16.4
PRIVATE COMMERCE & OFFICE PROCEDURES	1.0	0.2
PRIVATE COMMRC & ACCOUNTING	5.0	1.6

## 2012 JCE RESULTS SUMMARY

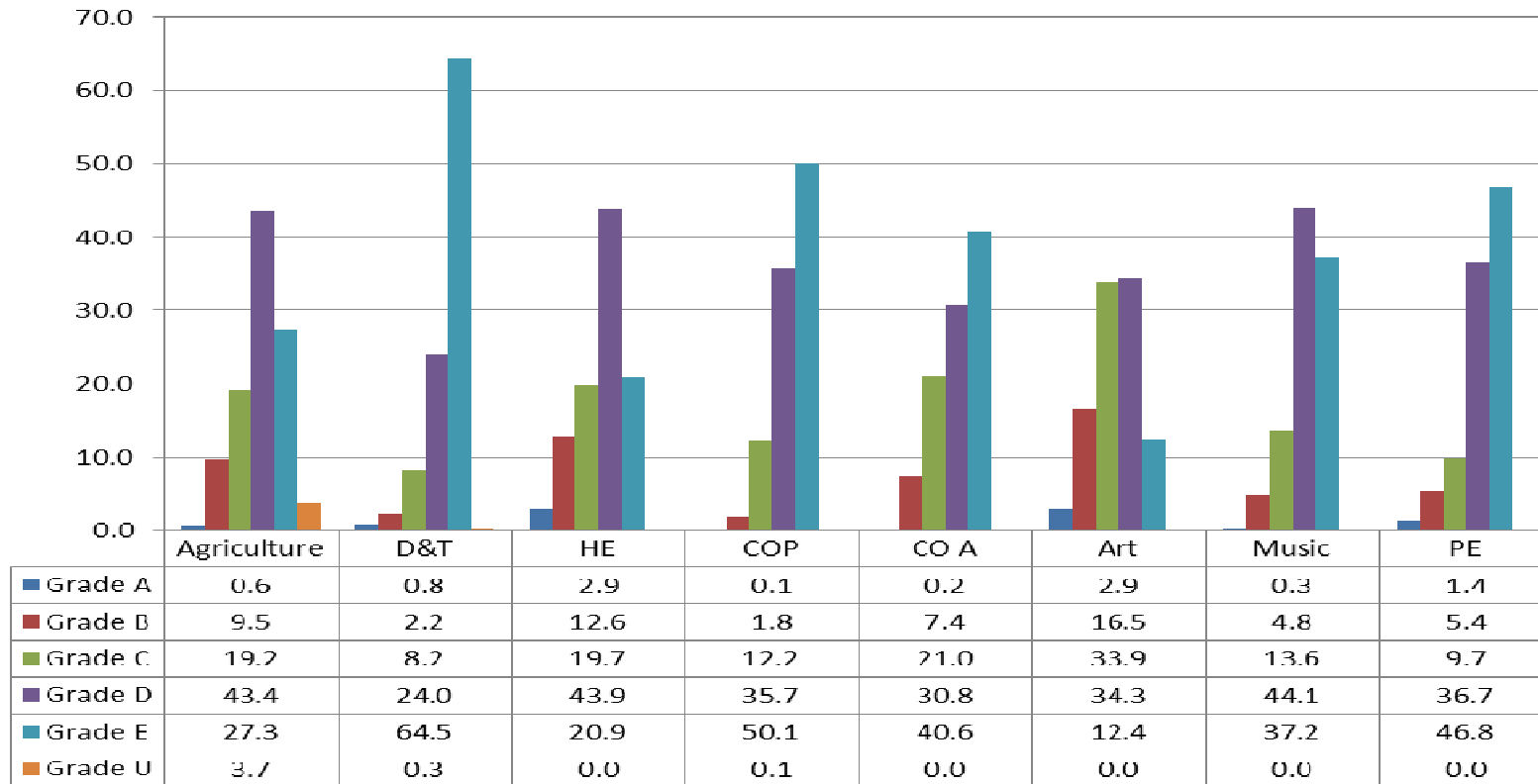
### 2012 Junior Certificate Examination: Percentage of Candidates at Each Grade in Core Subjects



- ◆ Moral Education has the highest proportion of candidates awarded Grade A at 7.1% followed by mathematics with 3.9%

## 2012 JCE RESULTS SUMMARY

**2012 JCE: Percentage of Candidates at Each Grade in Practical Subjects**

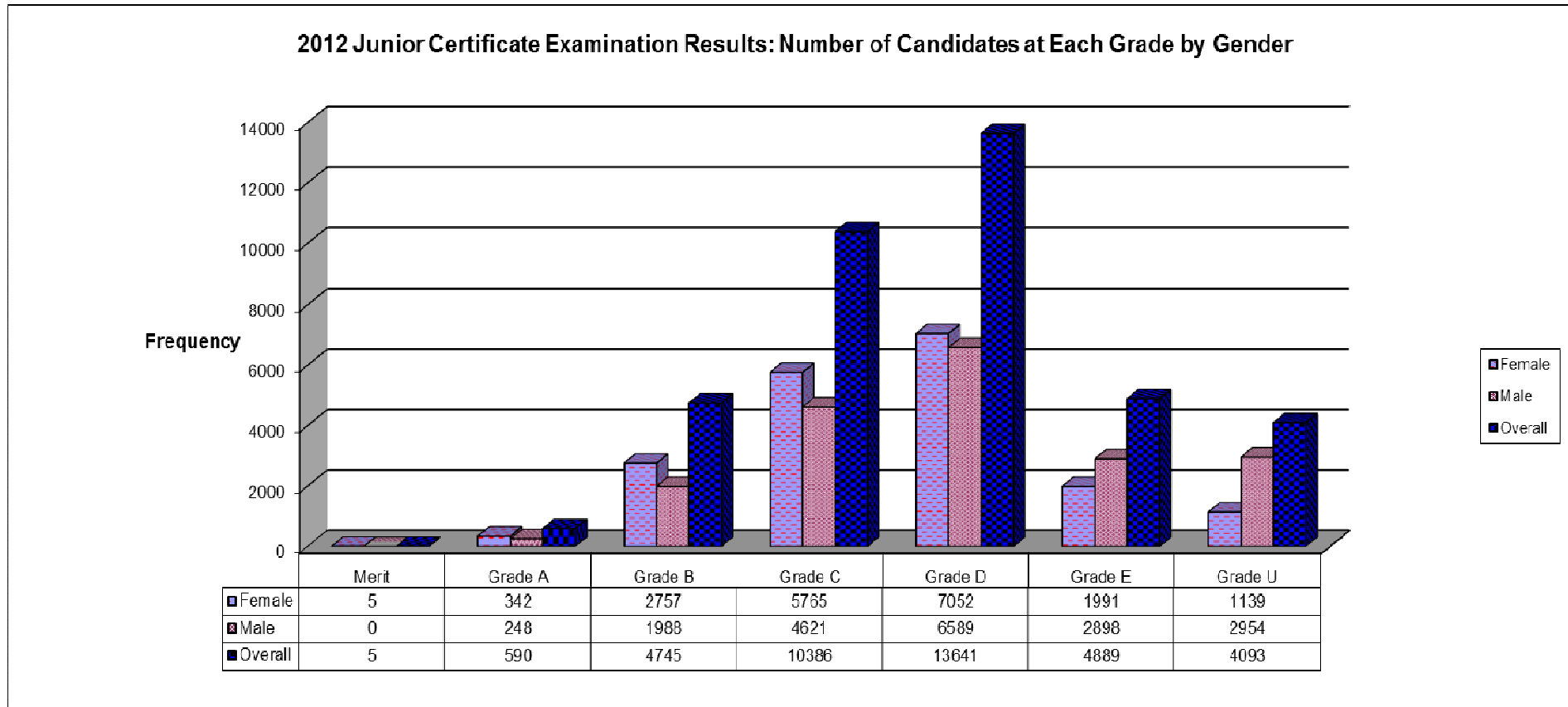


Art is the best performing optional subject followed by Home Economics



# 2012 JCE RESULTS SUMMARY

## 4.0: PERFORMANCE BY GENDER



◆ Girls perform better than boys at all grade levels. All the five merits were awarded to girls.

## 2012 JCE RESULTS SUMMARY

### Percentage of candidates at each grade by subject and gender

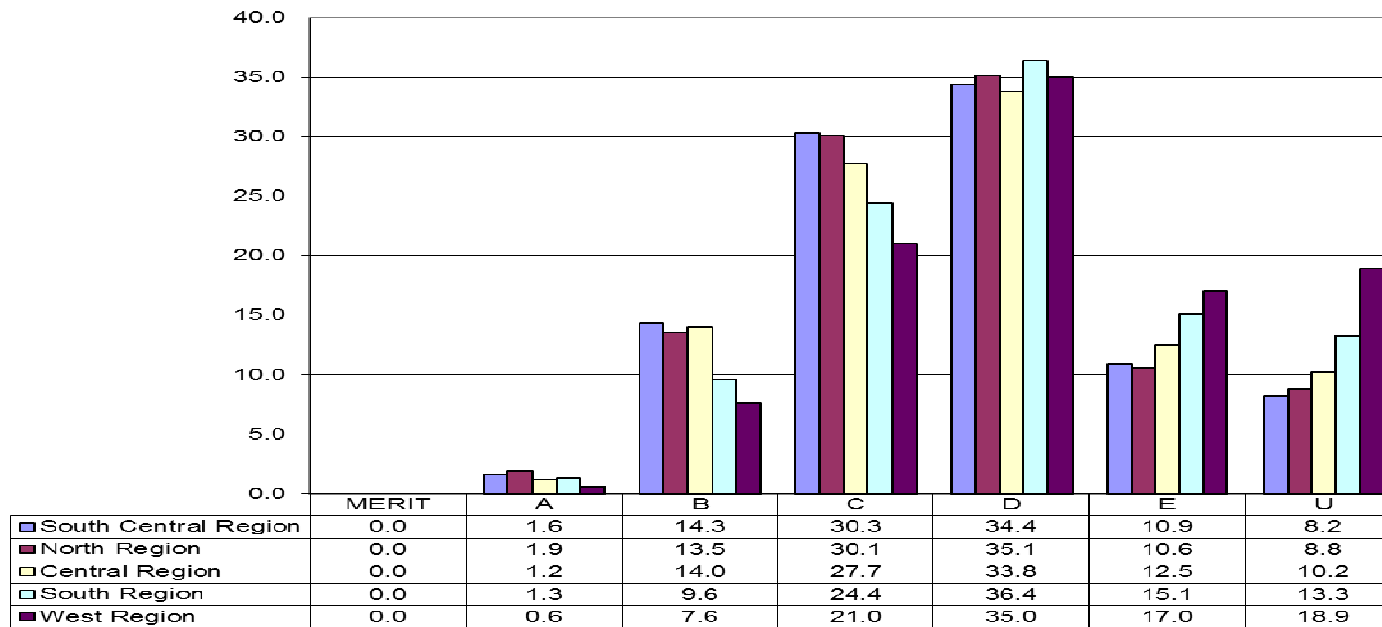
SUBJECT	FEMALE					MALE				
	A	B	C	D	E	A	B	C	D	E
SETSWANA	0.5	11.9	29.0	47.2	11.3	0.2	5.2	18.9	50.5	25.1
ENGLISH	2.2	17.1	26.9	37.2	16.6	1.6	14.2	24.9	38.0	21.3
MATHEMATICS	4.0	10.0	22.9	37.7	25.5	4.1	8.6	20.3	35.4	31.7
INTEGRATED SCIENCE	1.6	5.7	14.2	40.4	38.1	2.3	6.6	15.2	33.2	42.4
SOCIAL STUDIES	2.5	15.5	26.4	28.7	26.9	2.4	15.9	26.2	27.3	28.3
AGRICULTURE	0.6	10.0	21.0	47.9	20.4	0.7	9.8	18.9	42.2	28.2
DESIGN AND TECHNOLOGY	1.2	2.2	6.9	25.2	64.4	0.9	2.9	11.6	31.4	53.1
HOME ECONOMICS	3.5	15.0	22.3	45.4	13.7	1.3	6.7	14.0	45.9	32.2
COMMERCE AND OFFICE PROCEDURES	0.1	2.5	15.9	44.1	37.3	0.0	1.7	12.0	38.9	47.4
COMMERCE AND ACCOUNTING	0.2	8.8	25.7	35.8	29.4	0.3	7.8	21.7	34.4	35.7
RELIGIOUS EDUCATION	0.1	7.7	29.2	38.3	24.7	0.2	5.0	21.3	38.7	34.8
ART	2.0	16.3	37.2	35.4	9.1	3.4	17.1	33.3	34.7	11.5
PRIVATE AGRICULTURE	0.0	0.8	4.5	33.5	61.2	0.0	0.2	2.0	41.5	56.3
GENERAL SCIENCE	0.4	3.3	4.8	54.5	37.0	0.5	1.6	10.2	60.2	27.4
MORAL EDUCATION	10.8	26.9	21.6	25.3	15.4	5.8	21.3	21.6	28.7	22.6
FRENCH	1.7	5.8	12.9	29.2	50.4	0.5	3.4	7.8	22.7	65.6
MUSIC	0.4	6.6	18.4	51.2	23.4	0.3	4.2	12.1	49.6	33.8
PHYSICAL EDUCATION	1.3	5.9	10.9	42.9	39.1	1.8	6.3	11.1	4.8	40.1
PRIVATE COMMERCE AND OFFICE PROCEDURES	0.0	0.0	1.0	14.6	84.4	0.0	0.0	0.0	3.2	96.8
PRIVATE COMMERCE AND ACCOUNTING	0.0	2.4	4.8	21.4	71.4	0.0	0.0	4.2	9.8	85.5

◆ Females performed better than males in all subjects except Integrated Science.

## 2012 JCE RESULTS SUMMARY

### 5.0: PERFORMANCE BY EDUCATIONAL REGION

**PERCENTAGE OF CANDIDATES AT EACH GRADE BY EDUCATION REGION**



◆ Three regions namely South Central, North and Central performed above the national average of 41%