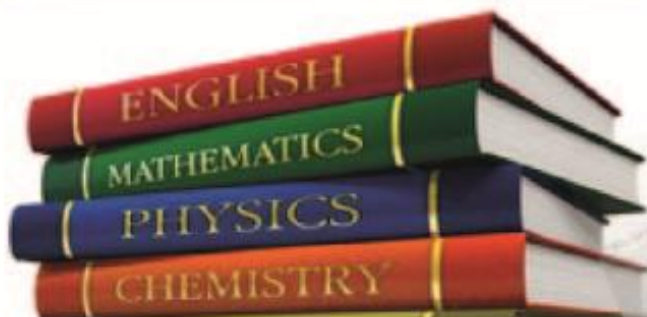




BOTSWANA
EXAMINATIONS
COUNCIL



2013 PRIMARY SCHOOL LEAVING
EXAMINATION RESULTS SUMMARY

The Primary School Leaving Examination (PSLE) is a criterion referenced examination that is administered to all learners who have completed the Ministry of Education and Skills Development (MOESD) 7-year primary school programme. PSLE candidates sit examinations in seven subjects, namely: Setswana, English, Mathematics, Science, Social Studies, Agriculture and Religious and Moral Education. PSLE results provide feedback across different levels of the education system in terms of the learner's achievement of important knowledge and skills within the primary education programme. This report presents a summary of the 2013 PSLE results. It reports performance at national, district, and city/town council levels and by subject and gender. The report is structured as follows:

- 1.0 Candidature
- 2.0 Overall Performance
- 3.0 Performance by District and Town/City Council
- 4.0 Performance by Subject
- 5.0 Performance by Gender
- 6.0 Summary of Results

1.0 CANDIDATURE

Table 1.1: PSLE CANDIDATURE IN 2011, 2012 AND 2013 BY SUBJECT			
SUBJECTS	2011	2012	2013
Setswana	41 600	42 863	43 095
English	42 429	43 583	43 785
Mathematics	42 429	43 583	43 785
Science	42 429	43 583	43 785
Social Studies	42 429	43 583	43 785
Agriculture	42 429	43 583	43 785
Religious and Moral Education	42 429	43 538	43 733
Total Candidature	42 429	43 583	43 788

- A total of 43 788 candidates sat for the 2013 Primary School Leaving Examination. Of this number, 22 135 were females 21 653 were males.
- The candidature increased from 43 583 in 2012 to 43 788 in 2013, which represents an increase of 205 (0.47%).

2.0 OVERALL PERFORMANCE

TABLE 2.1: 2013 PRIMARY SCHOOL LEAVING EXAMINATION RESULTS

Grade	Candidature	Percentage	Cumulative Percentage
A	5580	12.74	12.74
B	7688	17.56	30.30
C	16323	37.28	67.58
D	11422	26.08	93.66
E	2544	5.81	99.47
U	3	0.01	99.48
X	228	0.52	100.00
Total	43 788	100.00%	100.00%

- **U** denotes that a candidate fail to meet minimum requirements for Grade E.
- **X** denotes a candidate fail to meet the requirements for the award of the qualification.

FIGURE 2.2: 2013 PRIMARY SCHOOL LEAVING EXAMINATION RESULTS

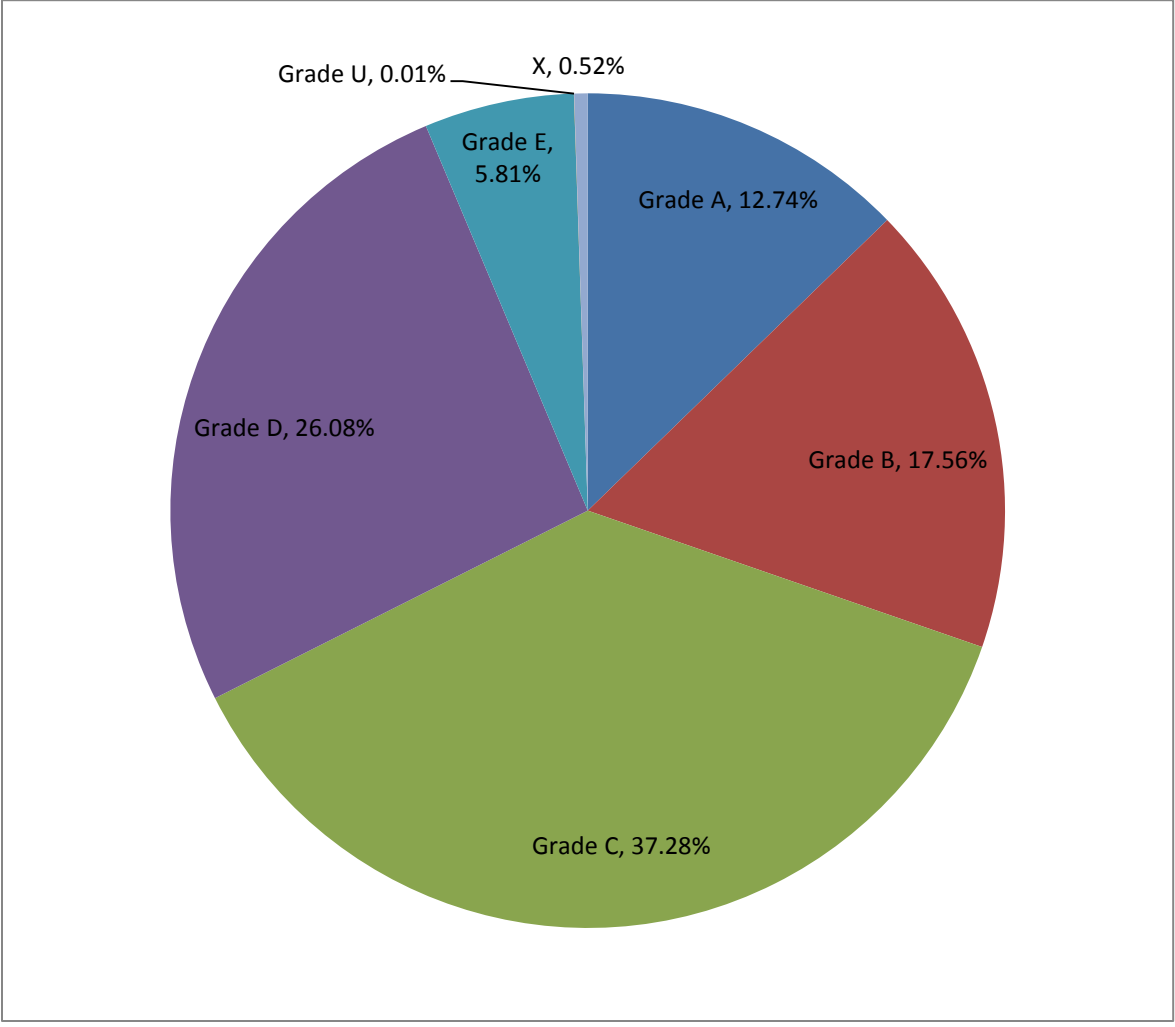
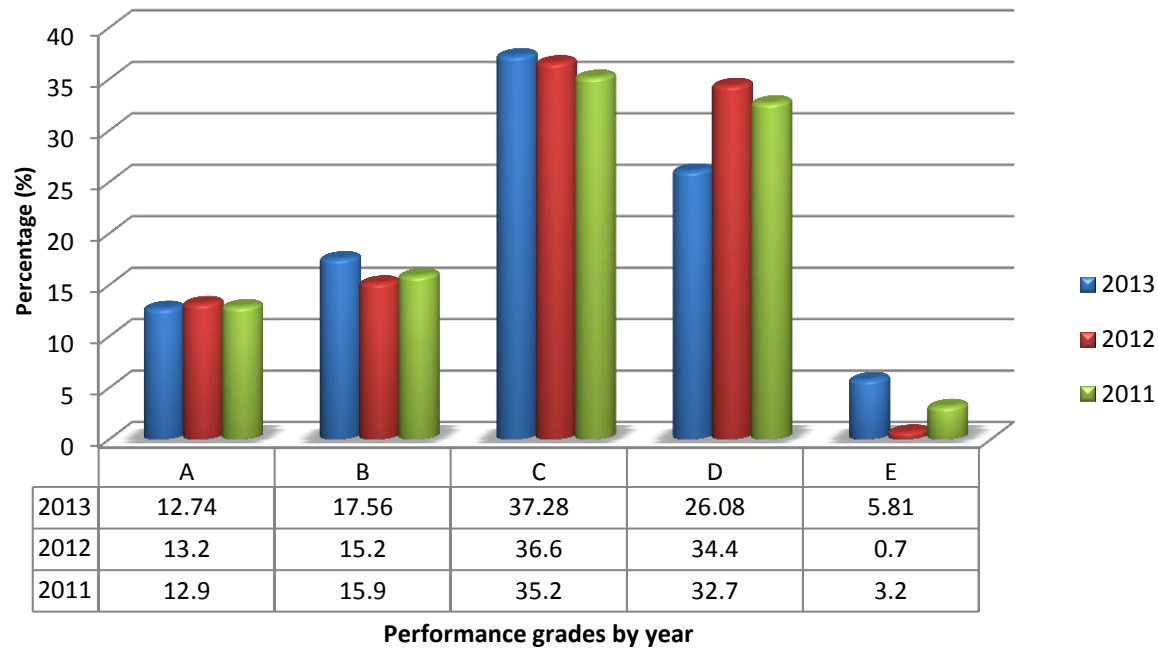


Figure 2.3: Comparison of PSLE Overall performance in 2013, 2012 and 2011

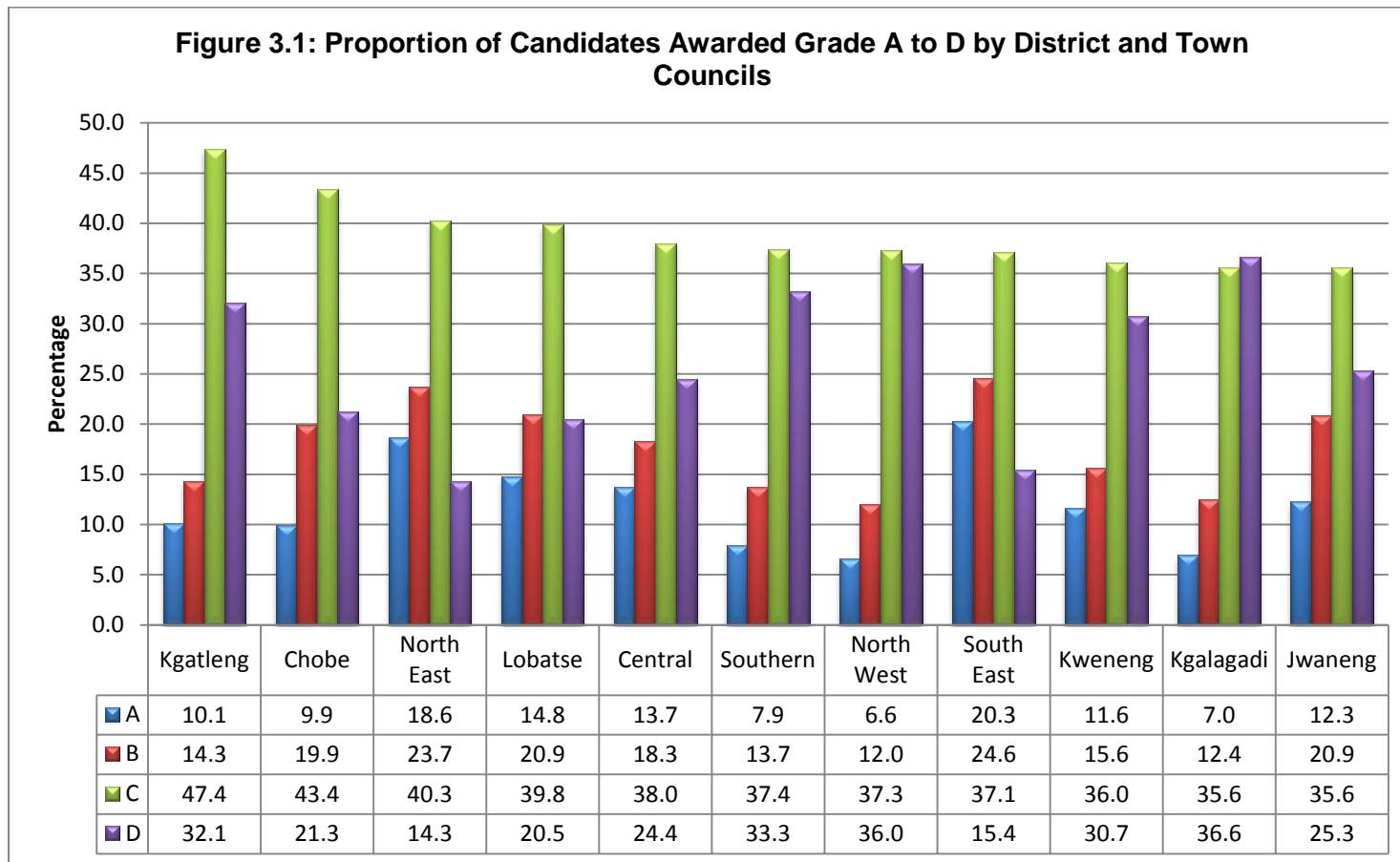


Performance in the 2013 PSLE decreased slightly by 0.46% from 13.2% in 2012 to 12.74% for Grade A.

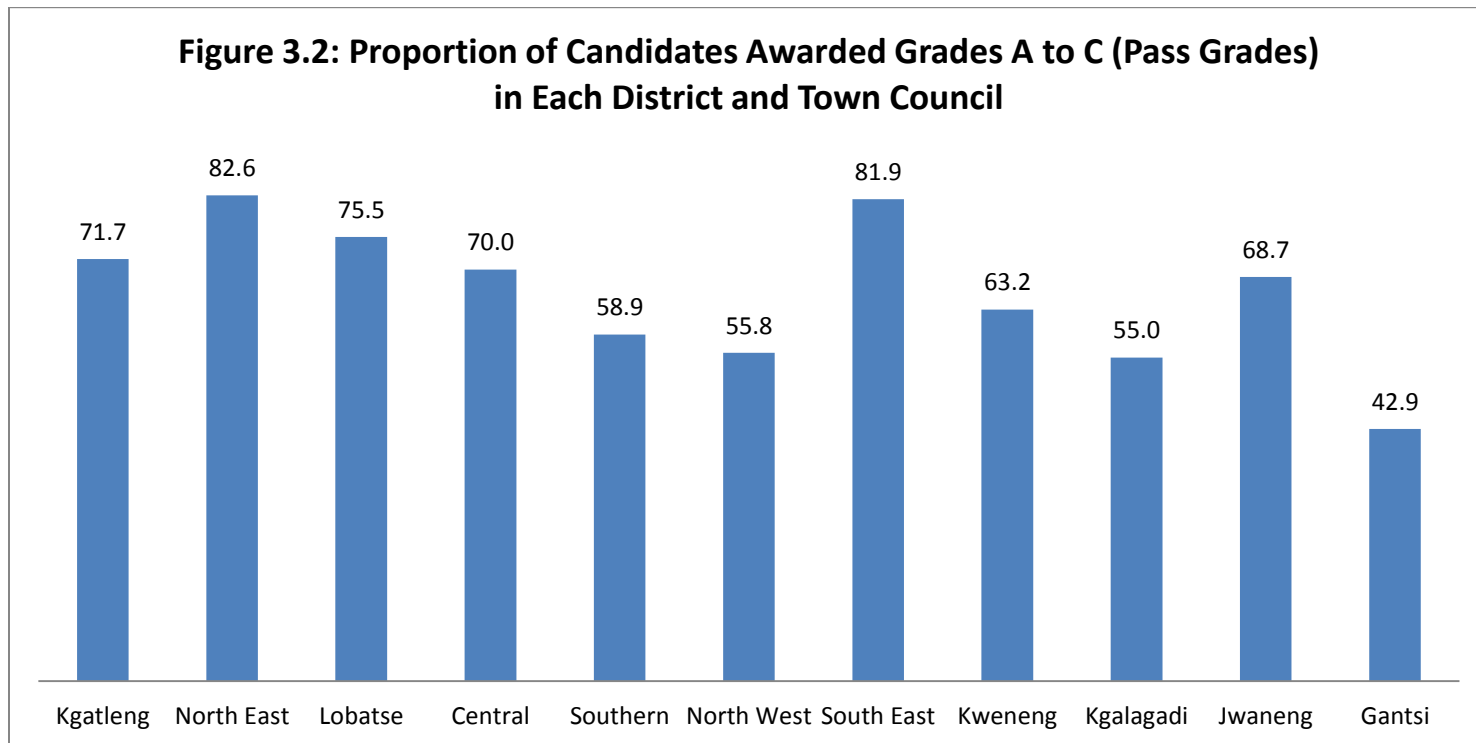
Percentage of candidates obtaining grade B increased by 2.36% from 15.20% in 2012 to 17.56% in 2013. Candidates at Grade C increased slightly by 0.68% to 37.28% in 2013 from 36.6% in 2012.

The proportion of candidates at grade D has increased by 8.32% from 26.08% (2012) to 34.4% (2013) while at grade E there was a increase to 5.81% (2013) from 0.7% (2012).

3.0 PERFORMANCE BY DISTRICT AND CITY/TOWN COUNCILS

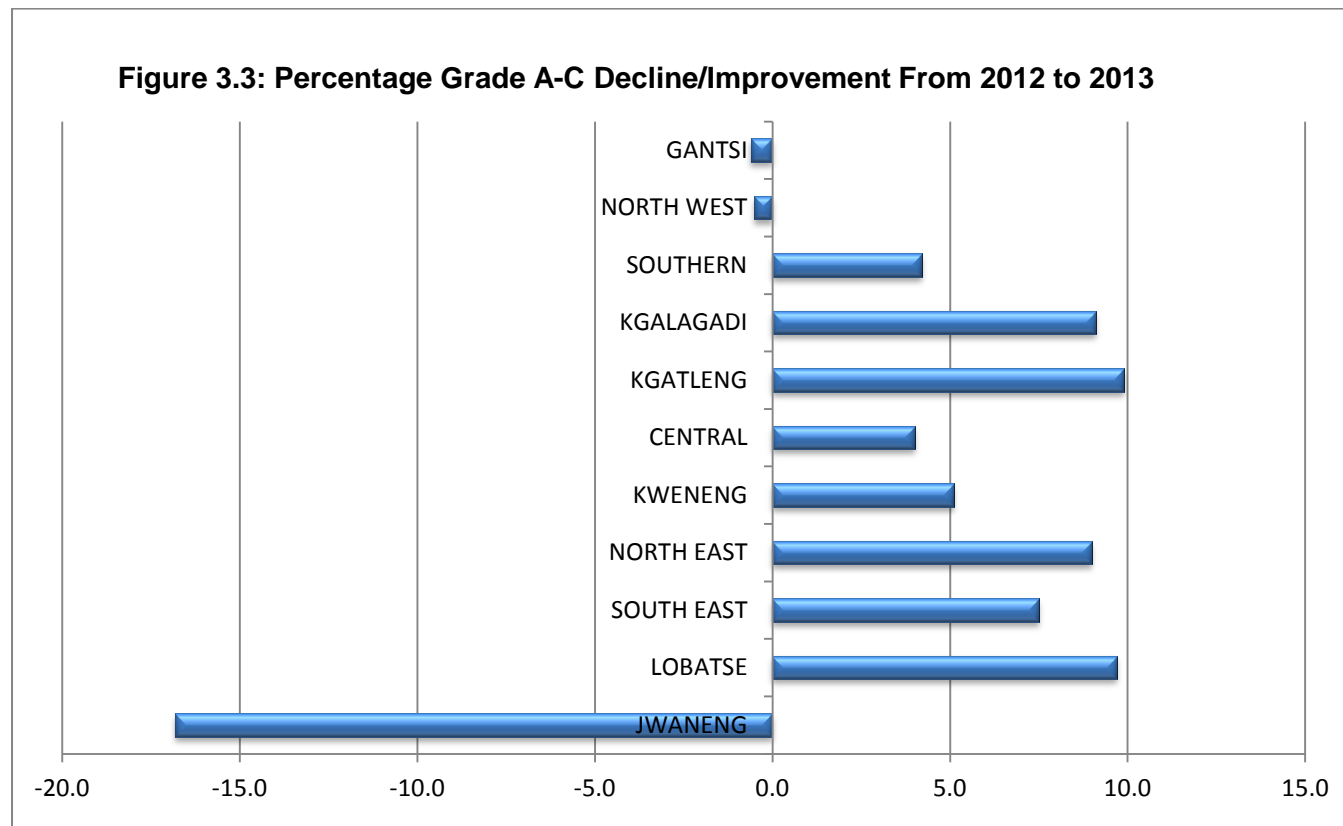


South East has the highest proportion of Grade A (20.3%) while North West has the least Grade A (6.6%). Kgalagadi has the largest proportion of Grade D (36.6%).



North East District with 82.6% and South East District with 81.9% performed significantly higher than other districts. The least performing district is Gantsi at 42.9%.

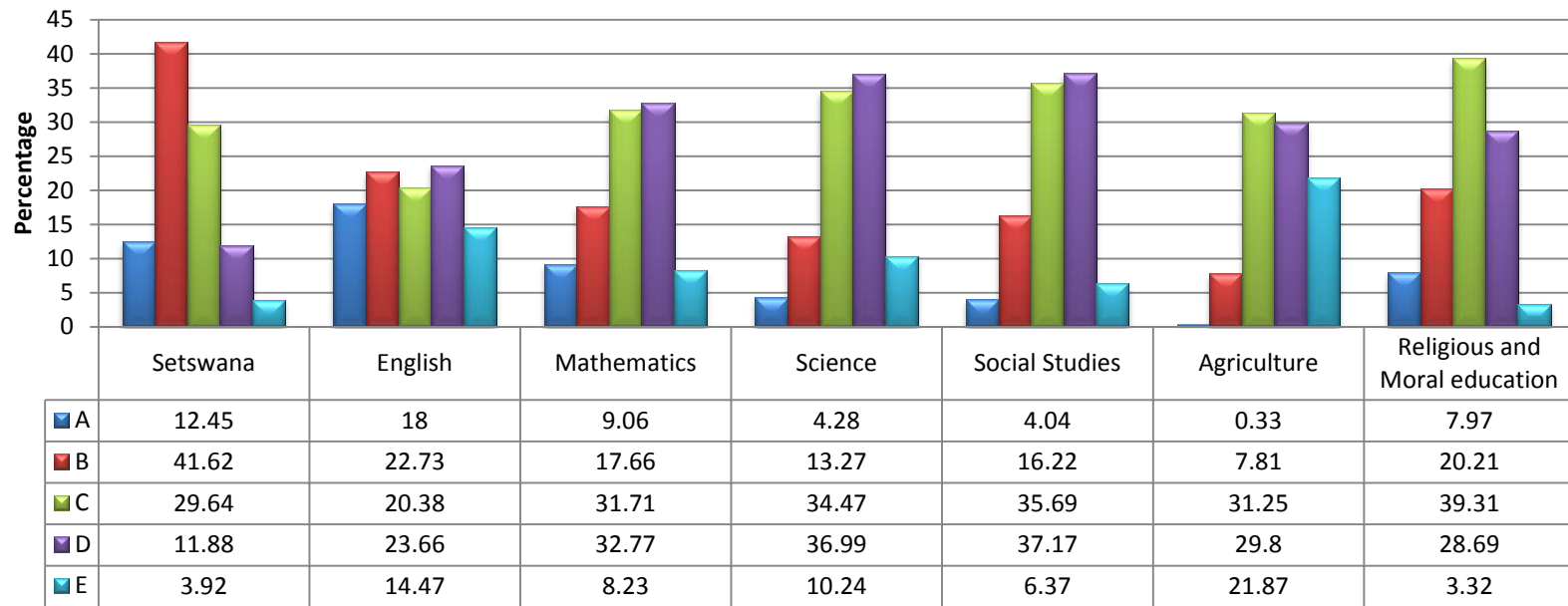
District/ Town Council	Decline/ Improvement
JWANENG	-16.8
LOBATSE	9.7
SOUTH EAST	7.5
NORTH EAST	9.0
KWENENG	5.1
CENTRAL	4.0
KGATLENG	9.9
KGALAGADI	9.1
SOUTHERN	4.2
NORTH WEST	-0.5
GANTSI	-0.6



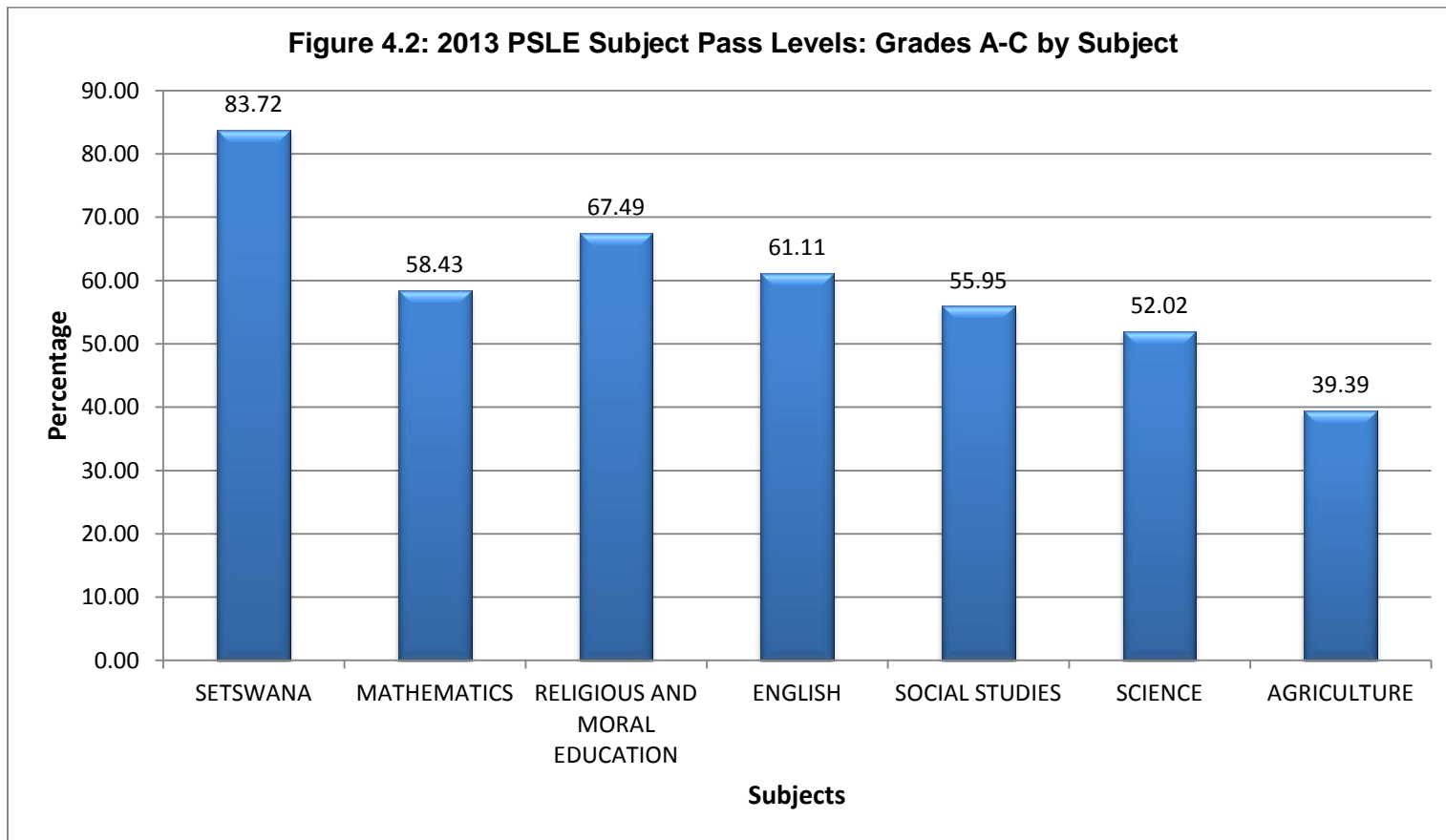
Compared to 2012, the proportion of candidates earning pass grades (grade A to C) increased in eight districts except for Gantsi, North West and Jwaneng which show a decline of 0.6%, 0.5% and 16.8% respectively. The decline in Jwaneng Town Council is a cause for concern and it needs to be investigated further.

4.0 PERFORMANCE BY SUBJECT

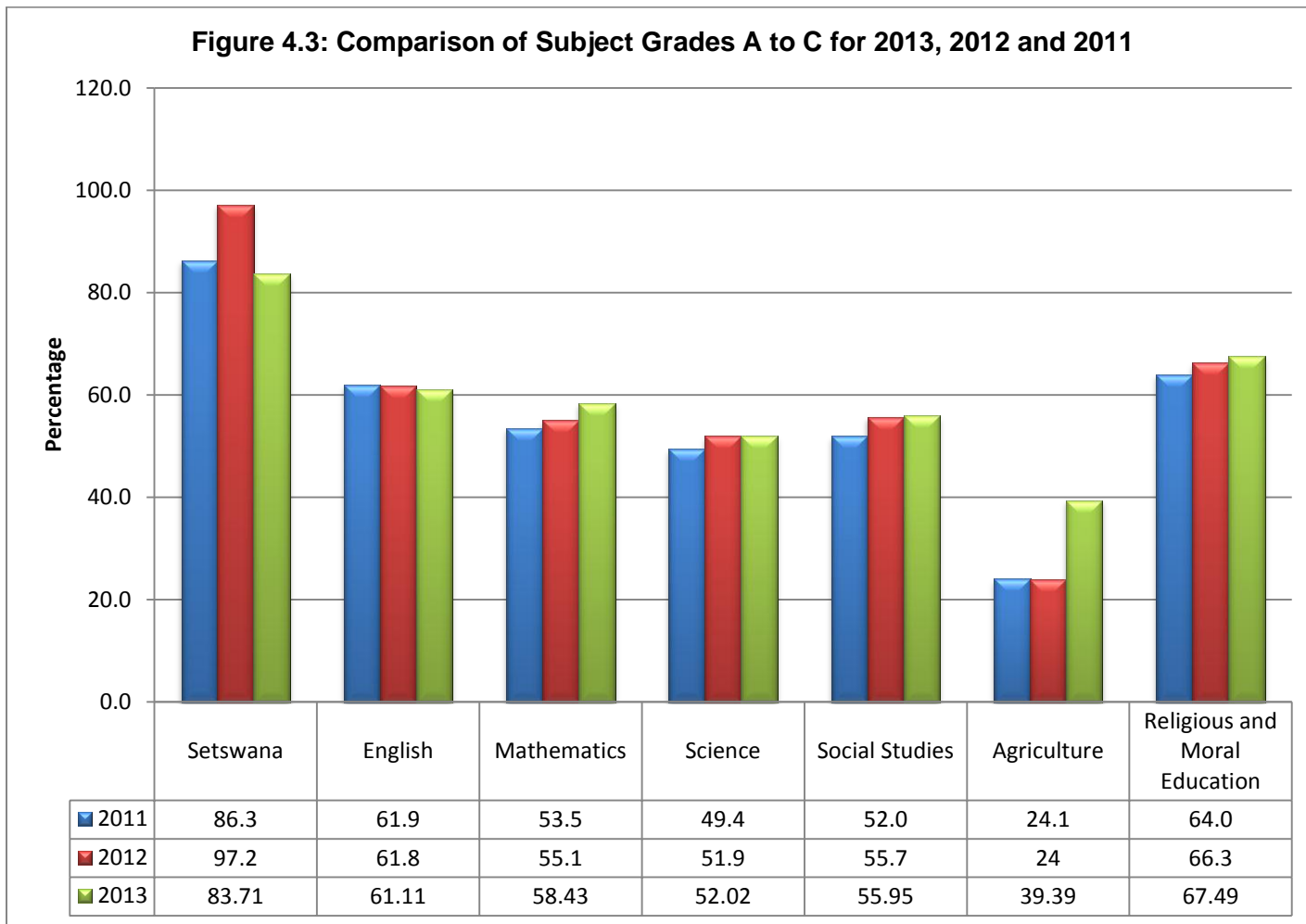
Figure 4.1: 2013 PSLE Subject Grades A to E



- The results show the highest proportion of candidates awarded grade A in English, at 18.0%.
- The lowest proportion of candidates awarded grade A is in Agriculture at 0.33%.
- Setswana has the highest proportion of candidates at grade B with 41.62% compared to other subjects.
- Religious and Moral Education also has the highest proportion of candidates awarded C at 39.31% compared to other subjects.
- Social Studies has the highest proportion of candidates awarded grade D at 37.17% when compared to other subjects.
- Agriculture has the highest proportion of candidates awarded grade E with 21.87%.



- Setswana registered the highest A to C grades at 83.7% followed by Religious and Moral Education at 67.5%.
- Agriculture has the lowest A to C grades at 39.4%.



5.0 OVERALL PERFORMANCE BY GENDER

Figure 5.1a: Overall Performance on the 2011 PSLE by Gender

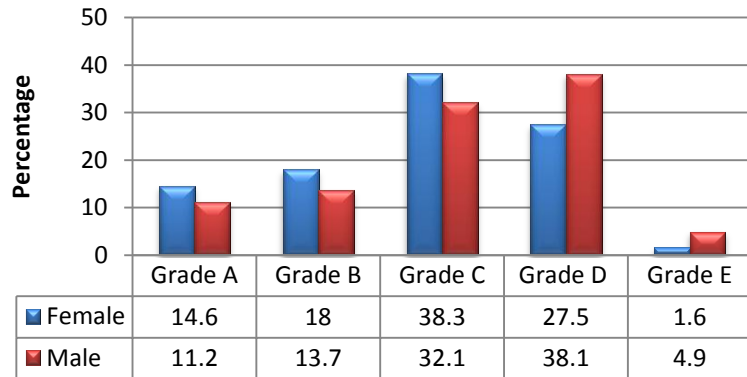


Figure 5.1b: Overall 2012 PSLE by Gender

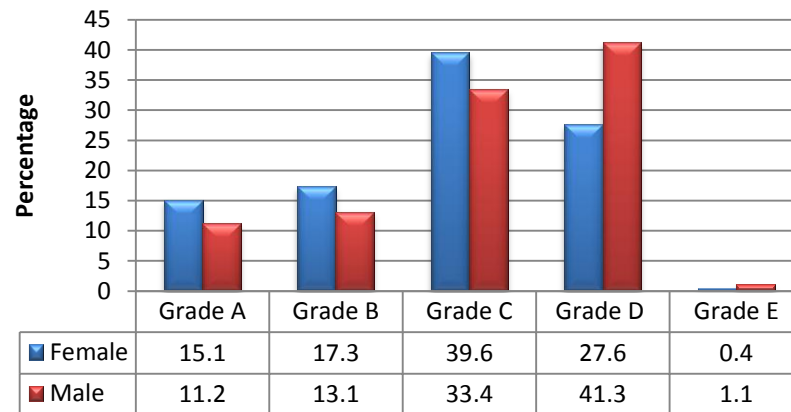
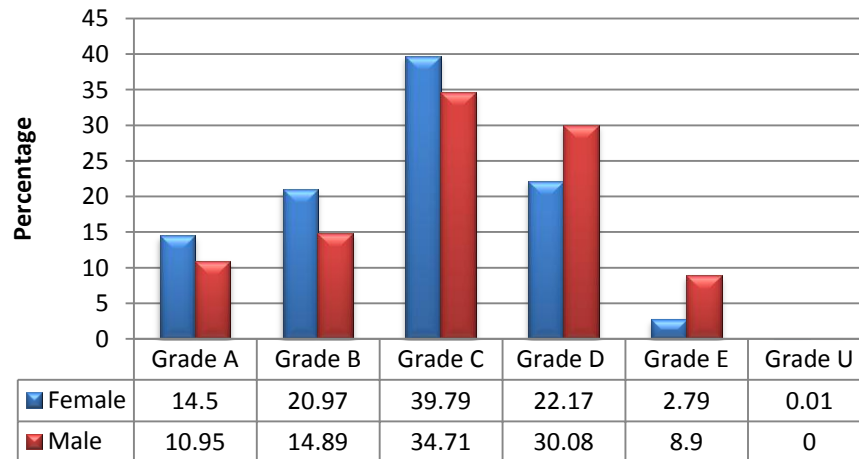
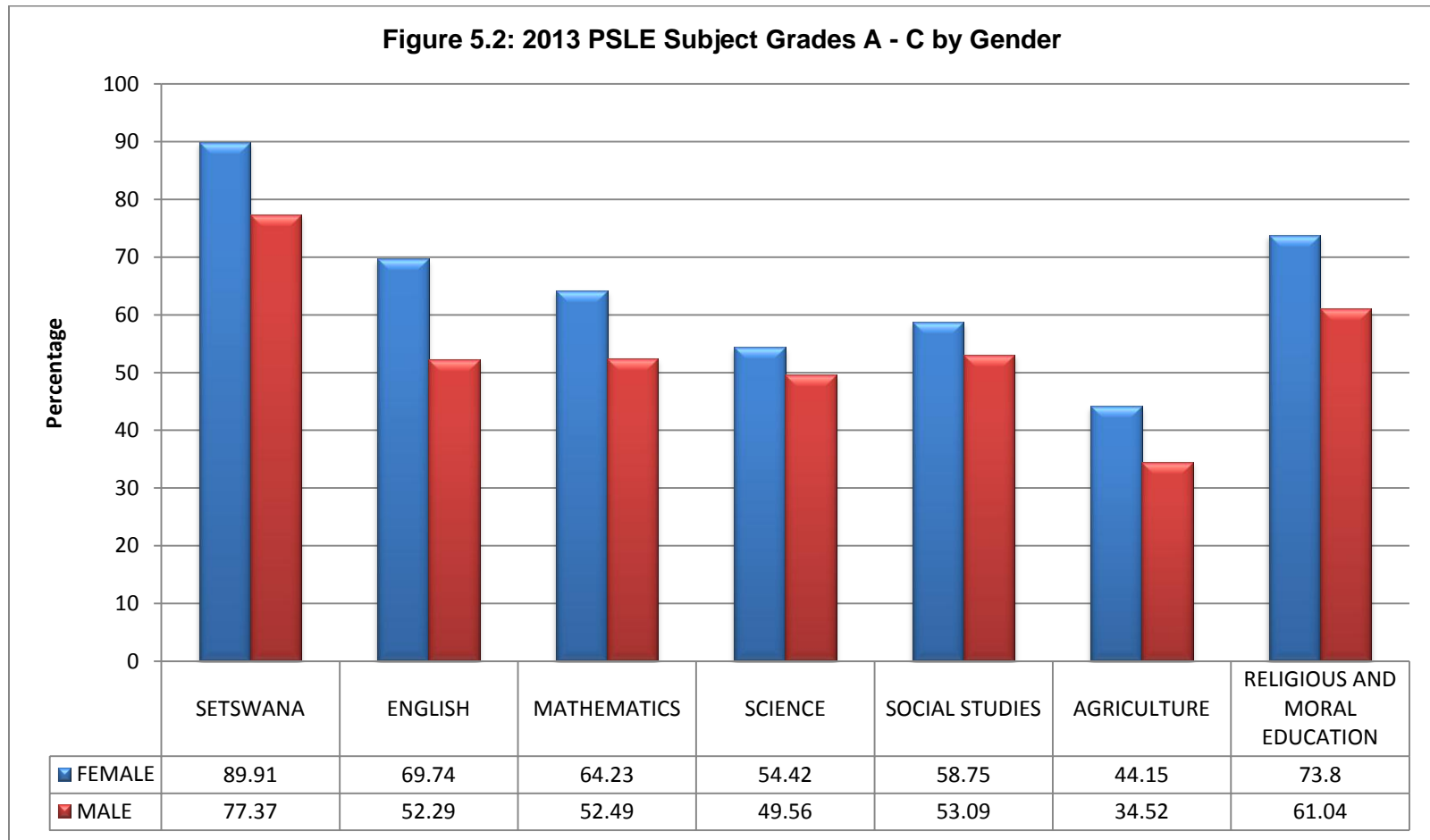


Figure 5.1c: Overall 2013 PSLE by Gender





- The 2013 results show the girls performing better than the boys across all subjects at A to C. The pattern is consistent across both the 2011 and 2012 results.

6.0 SUMMARY OF THE MESSAGE FROM THE 2013 PSLE RESULTS

- A total of 43 788 candidates sat the 2013 PSLE compared to 43 583 in 2012 and 42 429 in 2011, representing an increase of 0.47% in candidature between 2013 and 2012 and an increase of 2.7% between 2012 and 2011.
- Overall, there is an increase (2.58%) in the percentage of candidates awarded grades A to C, with 67.58% in 2013 compared to 65.0% in 2012.
- The slight improvement above may be attributable to improvements in overall performance in Mathematics, Science, Social Studies and Religious, Agriculture and Moral Education.
- Girls performed better than boys across all subjects.